

# XR260D 旋挖钻机 XR260D Rotary Drilling Rig

## XR系列 旋挖钻机

XR Series Rotary Drilling Rig

### 性能特点

采用单排绳主卷扬，有效解决钢丝绳磨损问题，提高钢丝绳的使用寿命；安装了红外线摄像头，在驾驶室就能昼夜观察主卷扬钢丝绳使用情况；可根据用户要求进行多种配置（如：支腿油缸、自动回转），扩展性能好；

选用康明斯电控涡轮增压发动机，满足欧Ⅲ排放标准，节能环保，动力强劲；

液压系统采用极限功率控制和正流量控制，使得液压系统效率更高，更加节能；

拥有专利的平行四边形变幅机构，实现了大范围的工作区域，钻桅设计为高强度材质的箱型结构，较高的强度与刚性，可有效保证钻孔精度；

新型结构动力头，采用多级减震技术、双密封结构有效提高可靠性，可拆卸驱动套压板，方便维修；

智能控制系统，检测装置更加精准可靠；

可选配6节钻杆，最大钻深可达80米。

可选配集中润滑系统，维护保养更便捷。

### Performance Characteristics

Single-row rope main winlass, effectively eliminating the rope abrasion and enhancing the service life of rope;

Infrared camera allowing the driver to observe the service condition of main winlass wire rope in the cab in the day and night;

More configurations available upon customer's demand (such as the outrigger cylinder and auto slewing) to enable better expansibility;

Cummins electronic control turbo supercharged engine meeting Euro III emission standard, saving energy, environmental protection and strong power;

Limit power control and positive flow control enabling higher efficiency of hydraulic system and more energy saving;

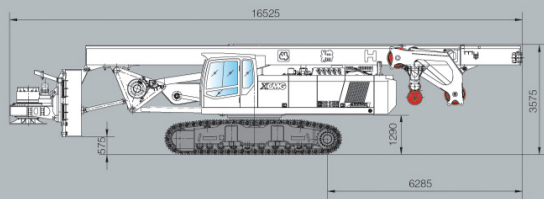
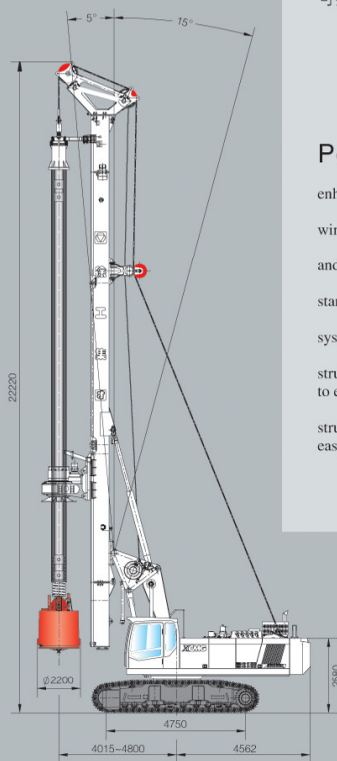
Patented parallelogram derricking mechanism, allowing wide range work area; box structure drilling mast made of high strength material enabling higher strength and rigidity to effectively guarantee the drilling accuracy;

New structure rotary employing multi-stage shock absorption technique and dual seal structure, effectively enhancing the reliability; the removable driving sleeve pressure plate easy to repair;

Intelligent control system enabling the detecting device more accurate and reliable;

Optional 6-section drill rod, allowing maximum drilling depth up to 80 m.

Centralized lubricating system is optional, allowing easier maintenance.



## XR260D 旋挖钻机主要技术参数

Main Technical Data of XR Series Multi-functional Combined Rotary Drilling Rig

主要技术参数 Main Technical Specification			
发动机 Engine	型号 Model		CUMMINS QSL-325
	额定功率 Rated Power	kW	242
动力头 Rotary Drive	最大输出扭矩 Max. output torque	kN·m	260
	转速 Rotary speed	r/min	7 ~ 22
最大钻孔直径 Max. Drilling Diameter		mm	φ2200
最大钻孔深度 Max. Drilling Depth		m	80
加压油缸 Pull-Down Cylinder	最大压力 Max. pull-down piston push	kN	200
	最大提升力 Max. pull-down piston pull	kN	200
	最大行程 Max. pull-down piston stroke	m	5
主卷扬 Main Winch	最大提升力 Max. Pulling force	kN	260
	最大卷扬速度 Max. line speed	m/min	70
副卷扬 Auxiliary Winch	最大提升力 Max. Pulling force	kN	80
	最大卷扬速度 Max. line speed	m/min	60
钻桅倾度 Mast Rate 侧向/前倾/后倾 Sideforwards/backwards			± 4° / 5° / 15°
底盘 Undercarriage	最大行走速度 Max. traveling speed	km/h	1.5
	最大爬坡度 Max. grade ability	%	35
	最小离地间隙 Min. Clearance	mm	449
	履带板宽度 Track shoe width	mm	800
履带最大总宽 Distance between tracks		mm	3250 ~ 4400
液压系统 Hydraulic System		工作压力 Working pressure	Mpa
			35
整机工作质量 Overall Drilling Weight		t	79
外形尺寸 Dimension	工作状态 Working condition	mm	10465 × 4400 × 22220
	运输状态 Transportation condition	mm	16525 × 3250 × 3575



# XR260D