

www.xzzx.com.cn

## QY130K-I汽车起重机 QY130K-I TRUCK CRANE

服务热线 Service Tel : 400-110-9999

本印刷品不属于合同。出于产品不断改进的需要，我们保留对产品型号、参数、配置进行变更的权利，恕不另行通知。图片仅供参考，具体产品以实物为准。图片中产品可能并非标准配置，部分部件可能需要另行购置。办理牌照和上路行驶需遵守当地法规。



**徐州重型机械有限公司**  
XUZHOU HEAVY MACHINERY CO.,LTD.

地址：中国江苏省徐州市铜山路165号 邮编(Post Code): 221004

Address: No.165 Tongshan Road Xuzhou Jiangsu China

电话(Tel): 0516-83462242 83462350

传真(Fax): 0516-83461669

服务电话(Service Tel): 0516-83461183

服务传真(Service Fax): 0516-83461180

质量监督电话(Quality Inquiry Tel): 0516-87888268

备件电话(Spare Parts Tel): 0516-83461542



请垂询  
CONTACT

## QY130K-I汽车起重机 QY130K-I TRUCK CRANE



闪耀登场



**徐州重型机械有限公司**

XUZHOU HEAVY MACHINERY CO.,LTD.

# 担当行走大道成利器

## 国内领先起重性能

起重性能全面提升3% 52米最大工作半径起重量为2.7吨

## 安全可靠黄金配置

德国原装进口530马力奔驰发动机、ZF12档变速箱、凯斯兰驱动桥



# QY130K-I

## 亮点优势展示

PRODUCT ADVANTAGES

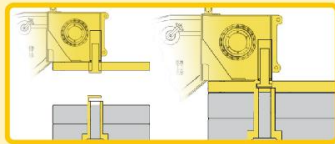
### 1 卓越的起重性能

- 六节主臂全伸长 59m, 并配备 28m 副臂, 最大起升高度达到 86.9m; 应用成熟的单缸插销技术, 具有超强起重能力, 吊臂伸缩可靠性高。



### 2 自组合式平衡重

- 配重增加至 39.5t, 具有人工遥控自装卸功能, 利用两个液压油缸悬挂在转台尾部, 起重性能平均提升 3%。

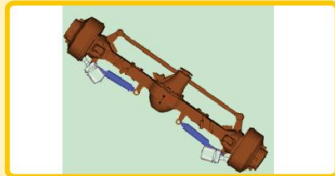


### 3 强劲的驱动装置

- 采用三桥驱动, 动力强劲, 德国进口凯斯兰驱动车桥, 综合性能优良, 重量轻, 免维护, 可以保证纵向、横向稳定性。

### 4 应急转向系统

- 应急转向油泵装在分动箱上, 应急转向系统保证车辆在突然失去动力被拖动时, 仍能够正常地进行自主转向, 大大提高了车辆行驶的安全性能。



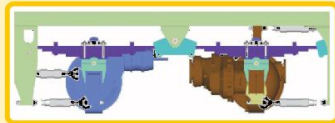
### 5 高配置传动机构

- 德国 ZF 自动变速箱, ZF 分动箱带转向应急泵, 万向端面齿大扭矩传动轴, 徐州美驰桥, 大吨位汽车起重机黄金配置。



### 6 悬架系统优化技术

- 运用多轴车辆平衡悬架专利技术, 并进行全新优化, 提升车辆复杂路面通过能力, 更加强了产品的可靠性。



## 技术参数 TECHNICAL SPECIFICATIONS

## QY130K-I

| 尺寸参数 Dimensions  | Unit        |               |
|--|-------------|---------------|
| 整机全长 Overall length                                    | mm          | 14980         |
| 整机全宽 Overall width                                     | mm          | 3000          |
| 整机全高 Overall height                                    | mm          | 3990          |
| 重量参数 Weight  |             |               |
| 行驶状态整机自重 Dead weight in travel state                   | kg          | 54900         |
| 第一、二轴轴荷 1st、2nd axle load                              | kg          | 7500/7500     |
| 第三、四轴轴荷 3rd、4th axle load                              | kg          | 8300/12000    |
| 第五、六轴轴荷 5th、6th axle load                              | kg          | 12000/7600    |
| 动力参数 Power   |             |               |
| 上车发动机型号 Superstructure engine                          |             | TAD720VE      |
| 上车发动机额定功率 Superstructure engine rated output           | kw/(r/min)  | 162/2100      |
| 上车发动机额定扭矩 Superstructure engine rated torque           | N.m/(r/min) | 1054/1500     |
| 下车发动机型号 Carrier engine                                 |             | OM460LA.E3A/1 |
| 下车发动机额定功率 Carrier engine rated output                  | kw/(r/min)  | 390/1800      |
| 下车发动机额定扭矩 Carrier engine rated torque                  | N.m/(r/min) | 2200/1100     |
| 行驶参数 Travel  |             |               |
| 最高行驶速度 Max.travel speed                                | km/h        | 80            |
| 最小转弯直径 Min.turning diameter                            | m           | 26            |
| 最小离地间隙 Min.ground clearance                            | mm          | 301           |
| 接近角 Approach angle                                     | °           | 20            |
| 离去角 Departure angle                                    | °           | 14            |
| 最大爬坡能力 Max.gradeability                                | %           | 40            |
| 百公里油耗 Fuel consumption of 100km                        | L           | 80            |
| 主要性能参数 Lifting performance                             |             |               |
| 最大额定总起重量 Max.total rated lifting load                  | t           | 130           |
| 最小额定工作幅度 Min.rated working radius                      | m           | 3             |
| 转台尾部回转半径 Turning radius at swing table tail            | m           | 4.6           |
| 基本臂最大起重力矩 Base boom max.load moment                    | kN.m        | 4998          |
| 基本臂 Base boom  | m           | 13.1          |
| 最长主臂 Full-extend boom                                  | m           | 59            |
| 最长主臂+副臂 Boom+Jib                                       | m           | 87            |
| 支腿纵向距离 Outrigger longitudinal distance span            | m           | 7.56          |
| 支腿横向距离 Outrigger lateral distance span                 | m           | 7.6 ( 5.2 )   |
| 工作速度参数 Working speed                                   |             |               |
| 起重臂变幅时间 Boom elevating time                            | s           | 60            |
| 起重臂伸缩时间 Boom telescoping time                          | s           | 420           |
| 最大回转速度 Max.slewing speed                               | r/min       | 1.8           |
| 主起升机构/空载(单绳) Main winch with no load(single line)      | m/min       | 115           |
| 副起升机构/空载(单绳) Auxiliary winch with no load(single line) | m/min       | 115           |

## 起重性能表 TOTAL RATED LIFTING LOAD

### QY130K-I 主臂起重性能表 Total rated lifting load for boom

全伸支腿7.6m, 平衡重39.5t, 360° 作业  
7.6m full-extend outrigger, 39.5t counterweight, 360° operation

| 工作幅度<br>Working radius<br>(m) | 臂长<br>Boom length<br>13.10m | 臂长<br>Boom length<br>17.30m | 臂长<br>Boom length<br>17.30m | 臂长<br>Boom length<br>17.30m | 臂长<br>Boom length<br>21.50m | 臂长<br>Boom length<br>21.50m | 臂长<br>Boom length<br>21.50m | 臂长<br>Boom length<br>25.80m | 臂长<br>Boom length<br>25.80m | 臂长<br>Boom length<br>25.80m |
|-------------------------------|-----------------------------|-----------------------------|-----------------------------|-----------------------------|-----------------------------|-----------------------------|-----------------------------|-----------------------------|-----------------------------|-----------------------------|
| 起重量 Lifting load (t)          |                             |                             |                             |                             |                             |                             |                             |                             |                             |                             |
| 3.0                           | 130.0                       | 70.5                        | 90.0                        | 112.0                       |                             |                             |                             |                             |                             |                             |
| 3.5                           | 125.0                       | 69.0                        | 90.0                        | 105.0                       |                             |                             |                             |                             |                             |                             |
| 4.0                           | 115.0                       | 65.3                        | 90.0                        | 100.0                       | 67.0                        | 51.0                        | 91.0                        | 44.8                        | 56.0                        | 77.0                        |
| 4.5                           | 105.0                       | 61.3                        | 81.0                        | 92.0                        | 66.0                        | 48.0                        | 86.0                        | 42.7                        | 55.7                        | 73.0                        |
| 5.0                           | 98.0                        | 58.4                        | 77.0                        | 86.0                        | 61.0                        | 45.0                        | 77.3                        | 40.5                        | 50.5                        | 69.0                        |
| 6.0                           | 85.0                        | 53.7                        | 73.0                        | 80.0                        | 56.0                        | 40.0                        | 70.1                        | 38.6                        | 46.5                        | 62.5                        |
| 7.0                           | 70.0                        | 47.5                        | 66.0                        | 70.9                        | 51.0                        | 36.8                        | 63.3                        | 36.0                        | 41.3                        | 56.8                        |
| 8.0                           | 60.0                        | 43.6                        | 59.0                        | 60.5                        | 45.8                        | 33.7                        | 57.5                        | 33.0                        | 38.5                        | 51.5                        |
| 9.0                           | 52.0                        | 40.3                        | 52.0                        | 52.6                        | 40.6                        | 31.9                        | 50.6                        | 31.0                        | 34.0                        | 47.2                        |
| 10.0                          | 45.0                        | 37.1                        | 47.0                        | 45.9                        | 37.5                        | 29.8                        | 45.5                        | 28.4                        | 30.8                        | 43.3                        |
| 12.0                          |                             | 33.5                        | 40.0                        | 39.4                        | 32.6                        | 25.5                        | 38.7                        | 25.3                        | 28.5                        | 37.7                        |
| 14.0                          |                             | 28.3                        | 30.7                        | 29.8                        | 28.4                        | 23.4                        | 29.5                        | 22.7                        | 25.3                        | 30.3                        |
| 16.0                          |                             |                             | 24.6                        | 21.3                        | 23.3                        | 20.2                        | 22.2                        | 24.1                        |                             |                             |
| 18.0                          |                             |                             |                             | 20.0                        | 19.7                        | 18.6                        | 17.6                        | 19.9                        | 19.5                        |                             |
| 20.0                          |                             |                             |                             |                             |                             |                             | 14.2                        | 13.9                        | 13.4                        |                             |
| 22.0                          |                             |                             |                             |                             |                             |                             |                             |                             |                             |                             |
| 组合<br>Combination             | 00000                       | 00001                       | 00010                       | 01000                       | 01100                       | 00011                       | 11000                       | 00111                       | 02100                       | 11100                       |
| 倍率<br>Parts of line           | 12                          | 6                           | 8                           | 10                          | 6                           | 5                           | 8                           | 4                           | 5                           | 7                           |
| 仰角范围<br>Angle area            | 24°~72°                     | 23°~77°                     |                             |                             | 22°~77°                     |                             |                             | 23°~80°                     |                             |                             |
| 吊钩<br>Hook block              | 130t                        |                             |                             | 100t                        |                             |                             |                             |                             |                             |                             |
| 钩重<br>Weight of hook block    | 1.6t                        |                             |                             | 1.5t                        |                             |                             |                             |                             |                             |                             |

- 表中额定总起重量所表示的数值, 是在平整坚固地面上本机起重机所能保证的最大起重量
- 表中额定起重量包含吊钩和吊具重量
- 起重臂的臂长组合中“0”表示吊臂伸出量为0%; “1”表示吊臂伸出量为46%; “2”表示吊臂伸出量为92%; “3”表示吊臂伸出量为100%。
- Total rated loads shown in the tables means the max.load capacity crane can ensure when crane is set on flat and firm ground.
- Each total rated load in the tables includes weight of the hook and slings.
- In boom telescoping modes, 0 indicates that boom sections are not extended out; 1 indicates that boom sections are extended out 46%; 2 indicates that boom sections are extended out 92%; 3 indicates that boom sections are extended out 100%.

### QY130K-I 主臂起重性能表 Total rated lifting load for boom

全伸支腿7.6m, 平衡重39.5t, 360° 作业  
7.6m full-extend outrigger, 39.5t counterweight, 360° operation

| 工作幅度<br>Working radius<br>(m) | 臂长<br>Boom length<br>30.00m | 臂长<br>Boom length<br>30.00m | 臂长<br>Boom length<br>30.00m | 臂长<br>Boom length<br>34.20m | 臂长<br>Boom length<br>34.20m | 臂长<br>Boom length<br>34.20m | 臂长<br>Boom length<br>38.40m | 臂长<br>Boom length<br>38.40m | 臂长<br>Boom length<br>38.40m |
|-------------------------------|-----------------------------|-----------------------------|-----------------------------|-----------------------------|-----------------------------|-----------------------------|-----------------------------|-----------------------------|-----------------------------|
| 起重量 Lifting load (t)          |                             |                             |                             |                             |                             |                             |                             |                             |                             |
| 4.5                           | 56.0                        | 44.0                        | 62.0                        |                             |                             |                             |                             |                             |                             |
| 5.0                           | 51.0                        | 42.0                        | 56.0                        | 47.4                        | 50.2                        | 56.5                        |                             |                             |                             |
| 6.0                           | 47.8                        | 39.0                        | 54.0                        | 45.2                        | 45.8                        | 51.7                        | 36.8                        | 35.5                        | 43.0                        |
| 7.0                           | 45.6                        | 35.5                        | 51.0                        | 43.0                        | 41.4                        | 46.9                        | 34.1                        | 32.9                        | 39.0                        |
| 8.0                           | 43.5                        | 32.6                        | 47.2                        | 39.1                        | 37.6                        | 42.3                        | 32.4                        | 30.3                        | 38.0                        |
| 9.0                           | 40.7                        | 29.7                        | 44.0                        | 35.8                        | 33.2                        | 38.3                        | 30.1                        | 27.9                        | 35.0                        |
| 10.0                          | 37.5                        | 27.2                        | 39.7                        | 33.6                        | 30.3                        | 36.5                        | 27.8                        | 23.6                        | 33.3                        |
| 12.0                          | 32.0                        | 25.5                        | 35.0                        | 28.2                        | 26.1                        | 33.2                        | 24.7                        | 21.5                        | 27.8                        |
| 14.0                          | 27.7                        | 22.2                        | 30.5                        | 25.5                        | 22.8                        | 29.0                        | 22.2                        | 19.6                        | 25.3                        |
| 16.0                          | 24.5                        | 21.0                        | 24.2                        | 21.8                        | 20.3                        | 24.3                        | 19.9                        | 18.0                        | 22.7                        |
| 18.0                          | 20.4                        | 18.8                        | 19.7                        | 19.5                        | 18.2                        | 19.8                        | 18.0                        | 16.5                        | 20.0                        |
| 20.0                          | 17.0                        | 17.2                        | 16.3                        | 17.6                        | 16.3                        | 16.4                        | 16.2                        | 14.7                        | 17.2                        |
| 22.0                          | 14.3                        | 15.6                        | 13.7                        | 15.2                        | 14.8                        | 13.8                        | 15.1                        | 13.8                        | 14.6                        |
| 24.0                          | 12.2                        | 13.6                        | 11.6                        | 13.0                        | 13.3                        | 11.7                        | 12.9                        | 12.8                        | 12.5                        |
| 26.0                          | 10.4                        | 11.8                        | 9.9                         | 11.3                        | 11.5                        | 10.0                        | 11.2                        | 11.7                        | 10.7                        |
| 28.0                          |                             |                             |                             | 9.9                         | 10.1                        | 8.6                         | 9.8                         | 10.4                        | 9.3                         |
| 30.0                          |                             |                             |                             | 8.6                         | 8.9                         | 7.4                         | 8.6                         | 9.2                         | 8.1                         |
| 32.0                          |                             |                             |                             |                             |                             |                             | 7.5                         | 8.2                         | 7.1                         |
| 34.0                          |                             |                             |                             |                             |                             |                             | 6.6                         | 7.3                         | 6.2                         |
| 组合<br>Combination             | 11110                       | 01111                       | 12100                       | 11111                       | 02111                       | 21110                       | 12111                       | 11112                       | 21111                       |
| 倍率<br>Parts of line           | 6                           | 4                           | 6                           | 5                           | 5                           | 6                           | 4                           | 4                           | 4                           |
| 仰角范围<br>Angle area            | 23°~81°                     |                             |                             | 22°~82°                     |                             |                             | 23°~82°                     |                             |                             |
| 吊钩<br>Hook block              | 65t                         |                             |                             |                             |                             |                             |                             |                             |                             |
| 钩重<br>Weight of hook block    | 1t                          |                             |                             |                             |                             |                             |                             |                             |                             |

- 表中额定总起重量所表示的数值, 是在平整坚固地面上本机起重机所能保证的最大起重量
- 表中额定起重量包含吊钩和吊具重量
- 起重臂的臂长组合中“0”表示吊臂伸出量为0%; “1”表示吊臂伸出量为46%; “2”表示吊臂伸出量为92%; “3”表示吊臂伸出量为100%。
- Total rated loads shown in the tables means the max.load capacity crane can ensure when crane is set on flat and firm ground.
- Each total rated load in the tables includes weight of the hook and slings.
- In boom telescoping modes, 0 indicates that boom sections are not extended out; 1 indicates that boom sections are extended out 46%; 2 indicates that boom sections are extended out 92%; 3 indicates that boom sections are extended out 100%.

**QY130K-I 主臂起重性能表 Total rated lifting load for boom**

全伸支腿7.6m，平衡重39.5t，360° 作业  
7.6m full-extend outrigger, 39.5t counterweight, 360° operation

| 工作幅度<br>Working radius<br>(m) | 臂长<br>Boom length<br>42.70m | 臂长<br>Boom length<br>42.70m | 臂长<br>Boom length<br>42.70m | 臂长<br>Boom length<br>46.90m | 臂长<br>Boom length<br>46.90m | 臂长<br>Boom length<br>51.10m | 臂长<br>Boom length<br>51.10m | 臂长<br>Boom length<br>55.30m | 臂长<br>Boom length<br>59.00m |         |
|-------------------------------|-----------------------------|-----------------------------|-----------------------------|-----------------------------|-----------------------------|-----------------------------|-----------------------------|-----------------------------|-----------------------------|---------|
| 起重量 Lifting load (t)          |                             |                             |                             |                             |                             |                             |                             |                             |                             |         |
| 7.0                           | 30.5                        | 26.8                        | 30.9                        |                             |                             |                             |                             |                             |                             |         |
| 8.0                           | 28.5                        | 25.2                        | 29.0                        | 23.4                        | 22.1                        | 26.8                        |                             |                             |                             |         |
| 9.0                           | 26.6                        | 23.6                        | 28.0                        | 22.2                        | 21.0                        | 25.0                        | 18.0                        | 22.5                        |                             |         |
| 10.0                          | 25.0                        | 22.1                        | 27.0                        | 20.7                        | 19.3                        | 22.5                        | 16.5                        | 19.0                        | 18.6                        | 14.5    |
| 12.0                          | 21.9                        | 19.6                        | 24.0                        | 19.1                        | 17.4                        | 21.0                        | 15.4                        | 17.0                        | 17.4                        | 13.0    |
| 14.0                          | 19.8                        | 17.5                        | 21.3                        | 17.5                        | 16.0                        | 19.2                        | 14.3                        | 15.5                        | 15.0                        | 12.3    |
| 16.0                          | 18.1                        | 15.9                        | 19.0                        | 15.8                        | 15.0                        | 17.4                        | 13.7                        | 14.2                        | 13.7                        | 11.9    |
| 18.0                          | 16.7                        | 14.7                        | 17.5                        | 14.3                        | 13.5                        | 15.8                        | 12.8                        | 13.5                        | 12.2                        | 10.8    |
| 20.0                          | 15.0                        | 13.4                        | 16.6                        | 13.2                        | 12.8                        | 14.3                        | 11.7                        | 12.7                        | 11.7                        | 10.4    |
| 22.0                          | 13.5                        | 12.5                        | 14.5                        | 12.2                        | 11.7                        | 12.3                        | 11.0                        | 11.8                        | 11.4                        | 9.6     |
| 24.0                          | 12.5                        | 11.8                        | 12.4                        | 11.2                        | 10.7                        | 11.5                        | 10.3                        | 11.0                        | 10.8                        | 9.0     |
| 26.0                          | 11.4                        | 11.0                        | 10.7                        | 10.3                        | 10.1                        | 10.8                        | 9.5                         | 10.1                        | 9.8                         | 8.3     |
| 28.0                          | 9.9                         | 10.3                        | 9.3                         | 9.6                         | 9.2                         | 9.5                         | 9.1                         | 9.5                         | 9.0                         | 7.8     |
| 30.0                          | 8.7                         | 9.5                         | 8.1                         | 8.7                         | 8.7                         | 8.3                         | 8.6                         | 8.6                         | 8.2                         | 7.1     |
| 32.0                          | 7.7                         | 8.5                         | 7.1                         | 8.0                         | 8.0                         | 7.2                         | 8.0                         | 7.6                         | 7.6                         | 6.8     |
| 34.0                          | 6.8                         | 7.5                         | 6.2                         | 7.1                         | 7.3                         | 6.3                         | 7.3                         | 6.7                         | 7.0                         | 6.3     |
| 36.0                          | 6.0                         | 6.7                         | 5.4                         | 6.3                         | 6.8                         | 5.5                         | 6.7                         | 5.9                         | 6.2                         | 5.7     |
| 38.0                          |                             |                             |                             | 5.5                         | 6.1                         | 4.9                         | 5.9                         | 5.2                         | 5.5                         | 5.3     |
| 40.0                          |                             |                             |                             | 5.0                         | 5.5                         | 4.2                         | 5.2                         | 4.6                         | 4.9                         | 4.9     |
| 42.0                          |                             |                             |                             |                             |                             |                             | 4.7                         | 4.0                         | 4.4                         | 4.4     |
| 44.0                          |                             |                             |                             |                             |                             |                             | 4.2                         | 3.5                         | 3.8                         | 3.9     |
| 46.0                          |                             |                             |                             |                             |                             |                             |                             |                             | 3.4                         | 3.4     |
| 48.0                          |                             |                             |                             |                             |                             |                             |                             |                             | 3.0                         | 3.0     |
| 50.0                          |                             |                             |                             |                             |                             |                             |                             |                             |                             | 2.7     |
| 52.0                          |                             |                             |                             |                             |                             |                             |                             |                             |                             | 2.3     |
| 组合<br>Combination             | 12211                       | 11122                       | 22111                       | 12221                       | 11222                       | 22211                       | 12222                       | 22221                       | 22222                       | 33333   |
| 倍率<br>Parts of line           | 3                           | 3                           | 3                           | 2                           | 2                           | 3                           | 2                           | 2                           | 2                           | 2       |
| 仰角范围<br>Angle area            | 30°~82°                     |                             |                             | 29°~81°                     |                             |                             | 29°~82°                     |                             | 28°~81°                     | 27°~82° |
| 吊钩<br>Hook block              | 65t                         |                             |                             | 30t                         |                             |                             |                             |                             |                             |         |
| 钩重<br>Weight of hook block    | 1t                          |                             |                             | 0.5t                        |                             |                             |                             |                             |                             |         |

- 表中额定总起重量所表示的数值，是在平整坚固地面上本机起重机所能保证的最大起重量
- 表中额定起重量包含吊钩和吊具重量
- 起重臂的臂长组合中“0”表示吊臂伸出量为0%；“1”表示吊臂伸出量为46%；“2”表示吊臂伸出量为92%；“3”表示吊臂伸出量为100%。
- Total rated loads shown in the tables means the max.load capacity crane can ensure when crane is set on flat and firm ground.
- Each total rated load in thr tables includes weight of the hook and slings.
- In boom telescoping modes, 0 indicates that boom sections are not extended out; 1 indicates that boom sections are extended out 46%; 2 indicates that boom sections are extended out 92%; 3 indicates that boom sections are extended out 100%.

**QY130K-I 主臂起重性能表 Total rated lifting load for boom**

半伸支腿5.2m，平衡重39.5t，360° 作业  
5.2m half-extend outrigger, 39.5t counterweight, 360° operation

| 工作幅度<br>Working radius<br>(m) | 臂长<br>Boom length<br>13.10m | 臂长<br>Boom length<br>17.30m | 臂长<br>Boom length<br>17.30m | 臂长<br>Boom length<br>17.30m | 臂长<br>Boom length<br>21.50m | 臂长<br>Boom length<br>21.50m | 臂长<br>Boom length<br>21.50m | 臂长<br>Boom length<br>25.80m | 臂长<br>Boom length<br>25.80m | 臂长<br>Boom length<br>25.80m |
|-------------------------------|-----------------------------|-----------------------------|-----------------------------|-----------------------------|-----------------------------|-----------------------------|-----------------------------|-----------------------------|-----------------------------|-----------------------------|
| 起重量 Lifting load (t)          |                             |                             |                             |                             |                             |                             |                             |                             |                             |                             |
| 3.0                           | 120.0                       | 52.0                        | 65.0                        | 105.0                       |                             |                             |                             |                             |                             |                             |
| 3.5                           | 108.0                       | 52.0                        | 65.0                        | 100.0                       |                             |                             |                             |                             |                             |                             |
| 4.0                           | 95.0                        | 52.0                        | 65.0                        | 92.0                        | 60.0                        | 48.0                        | 88.0                        | 44.0                        | 55.0                        | 70.0                        |
| 4.5                           | 86.0                        | 52.0                        | 60.0                        | 83.0                        | 56.0                        | 46.0                        | 75.0                        | 42.7                        | 53.0                        | 65.0                        |
| 5.0                           | 80.0                        | 52.0                        | 58.0                        | 77.0                        | 52.0                        | 44.0                        | 62.0                        | 40.5                        | 50.0                        | 60.0                        |
| 6.0                           | 70.0                        | 48.0                        | 53.0                        | 65.0                        | 46.0                        | 39.0                        | 50.0                        | 38.6                        | 46.0                        | 56.0                        |
| 7.0                           | 58.0                        | 45.0                        | 46.0                        | 52.2                        | 40.0                        | 36.0                        | 45.5                        | 36.0                        | 41.0                        | 50.5                        |
| 8.0                           | 48.6                        | 42.0                        | 43.9                        | 42.6                        | 36.0                        | 33.7                        | 40.6                        | 33.0                        | 38.2                        | 41.0                        |
| 9.0                           | 39.6                        | 36.0                        | 36.2                        | 35.0                        | 32.0                        | 31.9                        | 33.1                        | 31.0                        | 34.0                        | 33.9                        |
| 10.0                          | 32.9                        | 31.0                        | 30.6                        | 29.5                        | 30.1                        | 29.8                        | 29.0                        | 28.4                        | 29.0                        | 28.3                        |
| 12.0                          |                             | 23.3                        | 23.0                        | 21.8                        | 22.5                        | 24.0                        | 21.4                        | 25.0                        | 21.9                        | 20.8                        |
| 14.0                          |                             | 18.4                        | 17.9                        | 16.9                        | 17.6                        | 19.0                        | 16.6                        | 19.3                        | 17.0                        | 15.9                        |
| 16.0                          |                             |                             |                             |                             | 14.1                        | 15.5                        | 13.1                        | 15.2                        | 13.5                        | 13.5                        |
| 18.0                          |                             |                             |                             |                             | 11.5                        | 12.9                        | 10.5                        | 12.2                        | 10.9                        | 11.0                        |
| 20.0                          |                             |                             |                             |                             |                             |                             |                             | 10.2                        | 9.9                         | 10.0                        |
| 22.0                          |                             |                             |                             |                             |                             |                             |                             | 8.6                         | 8.0                         | 8.2                         |
| 组合<br>Combination             | 00000                       | 00001                       | 00010                       | 01000                       | 01100                       | 00011                       | 11000                       | 00111                       | 02100                       | 11100                       |
| 倍率<br>Parts of line           | 12                          | 6                           | 8                           | 10                          | 6                           | 5                           | 8                           | 4                           | 5                           | 7                           |
| 仰角范围<br>Angle area            | 24°~72°                     |                             | 23°~77°                     |                             | 22°~77°                     |                             |                             | 23°~80°                     |                             |                             |
| 吊钩<br>Hook block              | 130t                        |                             |                             | 100t                        |                             |                             |                             |                             |                             |                             |
| 钩重<br>Weight of hook block    | 1.6t                        |                             |                             | 1.5t                        |                             |                             |                             |                             |                             |                             |

- 表中额定总起重量所表示的数值，是在平整坚固地面上本机起重机所能保证的最大起重量
- 表中额定起重量包含吊钩和吊具重量
- 起重臂的臂长组合中“0”表示吊臂伸出量为0%；“1”表示吊臂伸出量为46%；“2”表示吊臂伸出量为92%；“3”表示吊臂伸出量为100%。
- Total rated loads shown in the tables means the max.load capacity crane can ensure when crane is set on flat and firm ground.
- Each total rated load in thr tables includes weight of the hook and slings.
- In boom telescoping modes, 0 indicates that boom sections are not extended out; 1 indicates that boom sections are extended out 46%; 2 indicates that boom sections are extended out 92%; 3 indicates that boom sections are extended out 100%.

**QY130K-I 主臂起重性能表 Total rated lifting load for boom**

半伸支腿5.2m, 平衡重39.5t, 360° 作业  
5.2m half-extend outrigger, 39.5t counterweight, 360° operation

| 工作幅度<br>Working radius<br>(m) | 臂长<br>Boom length<br>30.00m | 臂长<br>Boom length<br>30.00m | 臂长<br>Boom length<br>30.00m | 臂长<br>Boom length<br>34.20m | 臂长<br>Boom length<br>34.20m | 臂长<br>Boom length<br>34.20m | 臂长<br>Boom length<br>38.40m | 臂长<br>Boom length<br>38.40m | 臂长<br>Boom length<br>38.40m |
|-------------------------------|-----------------------------|-----------------------------|-----------------------------|-----------------------------|-----------------------------|-----------------------------|-----------------------------|-----------------------------|-----------------------------|
| 起重量 Lifting load (t)          |                             |                             |                             |                             |                             |                             |                             |                             |                             |
| 4.5                           | 54.0                        | 43.0                        | 60.0                        |                             |                             |                             |                             |                             |                             |
| 5.0                           | 46.0                        | 41.0                        | 55.0                        | 40.0                        | 44.0                        | 48.0                        |                             |                             |                             |
| 6.0                           | 38.0                        | 38.5                        | 51.0                        | 35.0                        | 40.5                        | 45.0                        | 34.5                        | 34.0                        | 37.0                        |
| 7.0                           | 32.0                        | 35.0                        | 43.5                        | 33.0                        | 38.5                        | 40.0                        | 32.0                        | 31.5                        | 35.0                        |
| 8.0                           | 29.0                        | 32.0                        | 37.0                        | 29.0                        | 35.2                        | 35.0                        | 29.5                        | 28.5                        | 32.5                        |
| 9.0                           | 26.5                        | 29.2                        | 33.5                        | 27.0                        | 32.0                        | 31.8                        | 27.0                        | 26.0                        | 30.5                        |
| 10.0                          | 25.0                        | 26.9                        | 28.4                        | 23.0                        | 28.5                        | 28.2                        | 24.0                        | 23.0                        | 28.0                        |
| 12.0                          | 22.6                        | 25.2                        | 20.9                        | 20.0                        | 25.2                        | 20.7                        | 22.0                        | 21.0                        | 21.5                        |
| 14.0                          | 17.5                        | 21.6                        | 16.0                        | 16.0                        | 21.4                        | 15.7                        | 17.0                        | 19.0                        | 16.5                        |
| 16.0                          | 13.8                        | 17.5                        | 12.6                        | 15.6                        | 15.6                        | 13.6                        | 16.4                        | 17.5                        | 13.4                        |
| 18.0                          | 11.1                        | 13.0                        | 11.9                        | 12.6                        | 12.8                        | 11.3                        | 13.4                        | 14.5                        | 10.9                        |
| 20.0                          | 9.0                         | 10.9                        | 9.8                         | 10.3                        | 10.7                        | 9.3                         | 11.1                        | 12.1                        | 8.9                         |
| 22.0                          | 8.2                         | 9.2                         | 8.1                         | 8.5                         | 9.0                         | 7.7                         | 9.2                         | 10.3                        | 7.3                         |
| 24.0                          | 6.7                         | 7.8                         | 6.8                         | 7.0                         | 7.6                         | 6.5                         | 7.7                         | 8.7                         | 6.8                         |
| 26.0                          | 5.4                         | 6.6                         | 5.7                         | 5.7                         | 6.5                         | 5.4                         | 6.5                         | 7.5                         | 6.4                         |
| 28.0                          |                             |                             |                             | 4.7                         | 5.5                         | 4.5                         | 5.4                         | 6.4                         | 6.0                         |
| 30.0                          |                             |                             |                             | 3.9                         | 4.7                         | 3.7                         | 4.5                         | 5.5                         | 5.1                         |
| 32.0                          |                             |                             |                             |                             |                             |                             | 3.8                         | 4.3                         | 3.4                         |
| 34.0                          |                             |                             |                             |                             |                             |                             | 3.3                         | 3.8                         | 2.9                         |
| 组合<br>Combination             | 11110                       | 01111                       | 12100                       | 11111                       | 02111                       | 21110                       | 12111                       | 11112                       | 21111                       |
| 倍率<br>Parts of line           | 6                           | 4                           | 6                           | 5                           | 5                           | 6                           |                             | 4                           | 4                           |
| 仰角范围<br>Angle area            | 23°~81°                     |                             |                             | 22°~82°                     |                             |                             | 23°~82°                     |                             |                             |
| 吊钩<br>Hook block              | 65t                         |                             |                             |                             |                             |                             |                             |                             |                             |
| 钩重<br>Weight of hook block    | 1t                          |                             |                             |                             |                             |                             |                             |                             |                             |

●表中额定总起重量所表示的数值,是在平整坚固地面上本机起重机所能保证的最大起重量

●表中额定起重量包含吊钩和吊具重量

●起重臂的臂长组合中“0”表示吊臂伸出量为0%;“1”表示吊臂伸出量为46%;“2”表示吊臂伸出量为92%;“3”表示吊臂伸出量为100%。

●Total rated loads shown in the tables means the max.load capacity crane can ensure when crane is set on flat and firm ground.

●Each total rated load in thr tables includes weight of the hook and slings.

●In boom telescoping modes, 0 indicates that boom sections are not extended out; 1 indicates that boom sections are extended out 46%; 2 indicates that boom sections are extended out 92%; 3 indicates that boom sections are extended out 100%.

**QY130K-I 主臂起重性能表 Total rated lifting load for boom**

半伸支腿5.2m, 平衡重39.5t, 360° 作业  
5.2m half-extend outrigger, 39.5t counterweight, 360° operation

| 工作幅度<br>Working radius<br>(m) | 臂长<br>Boom length<br>42.70m | 臂长<br>Boom length<br>42.70m | 臂长<br>Boom length<br>42.70m | 臂长<br>Boom length<br>46.90m | 臂长<br>Boom length<br>46.90m | 臂长<br>Boom length<br>46.90m | 臂长<br>Boom length<br>51.10m | 臂长<br>Boom length<br>51.10m | 臂长<br>Boom length<br>55.30m | 臂长<br>Boom length<br>59.00m |
|-------------------------------|-----------------------------|-----------------------------|-----------------------------|-----------------------------|-----------------------------|-----------------------------|-----------------------------|-----------------------------|-----------------------------|-----------------------------|
| 起重量 Lifting load (t)          |                             |                             |                             |                             |                             |                             |                             |                             |                             |                             |
| 7.0                           | 27.5                        | 25.0                        | 28.0                        |                             |                             |                             |                             |                             |                             |                             |
| 8.0                           | 26.5                        | 24.0                        | 27.0                        | 23.4                        | 22.0                        | 25.0                        |                             |                             |                             |                             |
| 9.0                           | 26.0                        | 22.5                        | 26.5                        | 22.2                        | 21.0                        | 24.0                        | 18.0                        | 20.0                        |                             |                             |
| 10.0                          | 23.0                        | 21.5                        | 23.5                        | 20.7                        | 19.0                        | 22.0                        | 16.0                        | 18.0                        | 16.5                        | 13.5                        |
| 12.0                          | 21.5                        | 18.5                        | 21.4                        | 19.1                        | 18.0                        | 19.5                        | 15.0                        | 16.5                        | 15.5                        | 12.5                        |
| 14.0                          | 17.0                        | 16.8                        | 16.5                        | 17.5                        | 16.0                        | 16.7                        | 14.0                        | 15.5                        | 13.5                        | 12.0                        |
| 16.0                          | 14.1                        | 14.5                        | 13.0                        | 14.4                        | 14.5                        | 13.2                        | 13.5                        | 13.6                        | 13.0                        | 11.5                        |
| 18.0                          | 11.5                        | 12.3                        | 10.8                        | 11.8                        | 11.9                        | 10.6                        | 12.0                        | 11.0                        | 11.4                        | 10.5                        |
| 20.0                          | 9.5                         | 10.3                        | 8.9                         | 9.8                         | 10.3                        | 9.1                         | 10.0                        | 9.0                         | 9.4                         | 9.4                         |
| 22.0                          | 7.9                         | 8.7                         | 7.3                         | 8.2                         | 8.8                         | 7.5                         | 8.6                         | 7.8                         | 7.8                         | 7.8                         |
| 24.0                          | 6.7                         | 7.4                         | 6.0                         | 7.0                         | 7.5                         | 6.2                         | 7.3                         | 6.5                         | 6.9                         | 6.5                         |
| 26.0                          | 6.4                         | 7.0                         | 5.5                         | 6.6                         | 7.2                         | 5.2                         | 6.3                         | 6.2                         | 6.5                         | 6.3                         |
| 28.0                          | 5.4                         | 6.7                         | 5.0                         | 5.6                         | 6.8                         | 4.5                         | 5.9                         | 5.8                         | 6.2                         | 5.6                         |
| 30.0                          | 4.5                         | 5.8                         | 4.5                         | 4.7                         | 5.9                         | 4.0                         | 5.0                         | 5.5                         | 5.4                         | 5.4                         |
| 32.0                          | 3.9                         | 4.5                         | 3.4                         | 4.2                         | 4.6                         | 3.6                         | 4.4                         | 3.8                         | 4.1                         | 4.2                         |
| 34.0                          | 3.4                         | 3.9                         | 2.9                         | 3.6                         | 4.0                         | 3.0                         | 3.9                         | 3.3                         | 3.6                         | 3.6                         |
| 36.0                          | 2.9                         | 3.4                         | 2.4                         | 3.1                         | 3.5                         | 2.6                         | 3.4                         | 2.8                         | 3.1                         | 3.1                         |
| 38.0                          |                             |                             |                             | 2.7                         | 3.1                         | 2.2                         | 3.0                         | 2.4                         | 2.6                         | 2.6                         |
| 40.0                          |                             |                             |                             | 2.3                         | 2.7                         | 1.8                         | 2.6                         | 2.0                         | 2.2                         | 2.3                         |
| 42.0                          |                             |                             |                             |                             |                             |                             | 2.2                         | 1.7                         | 1.9                         | 1.9                         |
| 44.0                          |                             |                             |                             |                             |                             |                             | 1.9                         | 1.4                         | 1.6                         | 1.7                         |
| 46.0                          |                             |                             |                             |                             |                             |                             |                             | 1.4                         | 1.4                         |                             |
| 48.0                          |                             |                             |                             |                             |                             |                             |                             | 1.1                         | 1.1                         |                             |
| 50.0                          |                             |                             |                             |                             |                             |                             |                             |                             |                             | 0.9                         |
| 组合<br>Combination             | 12211                       | 11122                       | 22111                       | 12221                       | 11222                       | 22211                       | 12222                       | 22221                       | 22222                       | 33333                       |
| 倍率<br>Parts of line           | 3                           | 3                           | 3                           | 2                           | 2                           | 3                           | 2                           | 2                           | 2                           | 2                           |
| 仰角范围<br>Angle area            | 30°~82°                     |                             |                             | 29°~81°                     |                             |                             | 29°~82°                     |                             | 28°~81° 32°~82°             |                             |
| 吊钩<br>Hook block              | 65t                         |                             |                             |                             |                             |                             |                             |                             |                             |                             |
| 钩重<br>Weight of hook block    | 1t                          |                             |                             |                             |                             | 0.5t                        |                             |                             |                             |                             |

●表中额定总起重量所表示的数值,是在平整坚固地面上本机起重机所能保证的最大起重量

●表中额定起重量包含吊钩和吊具重量

●起重臂的臂长组合中“0”表示吊臂伸出量为0%;“1”表示吊臂伸出量为46%;“2”表示吊臂伸出量为92%;“3”表示吊臂伸出量为100%。

●Total rated loads shown in the tables means the max.load capacity crane can ensure when crane is set on flat and firm ground.

●Each total rated load in thr tables includes weight of the hook and slings.

●In boom telescoping modes, 0 indicates that boom sections are not extended out; 1 indicates that boom sections are extended out 46%; 2 indicates that boom sections are extended out 92%; 3 indicates that boom sections are extended out 100%.

**QY130K-I 副臂起重性能表 Total rated lifting load for jib**

副臂长度11.55m, 全伸支腿7.6m, 平衡重39.5t, 360° 作业  
11.55m jib, 7.6m full-extend outrigger, 39.5t counterweight, 360° operation

| 工作幅度<br>Working radius<br>(m) | 臂长<br>Boom length<br>42.70m |     |     | 臂长<br>Boom length<br>46.90m |     |     | 臂长<br>Boom length<br>51.10m |     |     | 臂长<br>Boom length<br>55.30m |     |     | 臂长<br>Boom length<br>59.00m |     |     |
|-------------------------------|-----------------------------|-----|-----|-----------------------------|-----|-----|-----------------------------|-----|-----|-----------------------------|-----|-----|-----------------------------|-----|-----|
|                               | 0°                          | 15° | 30° | 0°                          | 15° | 30° | 0°                          | 15° | 30° | 0°                          | 15° | 30° | 0°                          | 15° | 30° |

起重量 Lifting load (t)

|                            |          |       |       |          |       |       |          |       |       |          |     |       |          |     |     |     |
|----------------------------|----------|-------|-------|----------|-------|-------|----------|-------|-------|----------|-----|-------|----------|-----|-----|-----|
| 9.0                        | 11.5     |       |       |          |       |       |          |       |       |          |     |       |          |     |     |     |
| 10.0                       | 10.5     |       |       |          |       |       |          |       |       |          |     |       |          |     |     |     |
| 12.0                       | 10.0     | 8.0   | 9.8   |          |       | 9.5   |          |       |       |          |     |       |          |     |     |     |
| 14.0                       | 9.8      | 7.3   | 6.0   | 9.5      | 7.0   | 9.0   |          | 6.9   | 8.5   |          |     | 6.5   |          |     |     |     |
| 16.0                       | 9.5      | 6.8   | 5.7   | 9.2      | 6.6   | 5.8   | 8.7      | 6.7   | 6.0   | 8.0      | 6.5 | 6.3   |          | 6.3 |     |     |
| 18.0                       | 9.1      | 6.3   | 5.5   | 8.8      | 6.2   | 5.6   | 8.3      | 6.3   | 5.7   | 7.8      | 6.1 | 5.7   | 6.0      | 6.0 | 5.3 |     |
| 20.0                       | 8.7      | 5.9   | 5.2   | 8.5      | 5.8   | 5.3   | 8.0      | 6.0   | 5.5   | 7.5      | 5.7 | 5.5   | 5.7      | 5.7 | 5.0 |     |
| 22.0                       | 8.3      | 5.6   | 5.0   | 8.0      | 5.6   | 5.1   | 7.7      | 5.7   | 5.2   | 7.1      | 5.3 | 5.2   | 5.4      | 5.3 | 4.8 |     |
| 24.0                       | 7.8      | 5.3   | 4.7   | 7.5      | 5.4   | 4.9   | 7.3      | 5.3   | 5.0   | 6.8      | 5.1 | 5.0   | 5.2      | 5.1 | 4.6 |     |
| 26.0                       | 7.3      | 5.1   | 4.5   | 7.2      | 5.2   | 4.7   | 7.1      | 5.1   | 4.7   | 6.4      | 4.8 | 4.7   | 5.0      | 4.7 | 4.3 |     |
| 28.0                       | 6.9      | 4.9   | 4.4   | 6.8      | 5.0   | 4.5   | 6.7      | 4.8   | 4.4   | 6.0      | 4.6 | 4.4   | 4.8      | 4.5 | 4.2 |     |
| 30.0                       | 6.5      | 4.7   | 4.3   | 6.5      | 4.8   | 4.3   | 6.3      | 4.3   | 4.2   | 5.7      | 4.3 | 4.2   | 4.5      | 4.3 | 4.1 |     |
| 32.0                       | 6.3      | 4.5   | 4.2   | 6.2      | 4.6   | 4.2   | 6.0      | 4.1   | 4.0   | 5.4      | 4.1 | 4.0   | 4.3      | 4.0 | 4.0 |     |
| 34.0                       | 6.0      | 4.3   | 4.1   | 6.0      | 4.5   | 4.1   | 5.7      | 3.9   | 3.9   | 5.0      | 3.8 | 3.9   | 4.1      | 3.8 | 3.9 |     |
| 36.0                       | 5.8      | 4.2   | 4.0   | 5.8      | 4.3   | 4.0   | 5.4      | 3.8   | 3.8   | 4.8      | 3.6 | 3.8   | 3.9      | 3.5 | 3.8 |     |
| 38.0                       | 5.6      | 4.1   | 3.9   | 5.4      | 4.1   | 3.9   | 5.0      | 3.6   | 3.8   | 4.5      | 3.5 | 3.8   | 3.6      | 3.4 | 3.7 |     |
| 40.0                       | 5.0      | 3.9   | 3.8   | 5.0      | 3.9   | 3.8   | 4.8      | 3.4   | 3.7   | 4.1      | 3.3 | 3.7   | 3.4      | 3.2 | 3.6 |     |
| 42.0                       | 4.5      | 3.8   | 3.7   | 4.6      | 3.7   | 3.6   | 4.5      | 3.3   | 3.6   | 3.8      | 3.1 | 3.5   | 3.2      | 3.0 | 3.4 |     |
| 44.0                       | 3.7      |       | 3.6   | 4.1      | 3.5   | 3.4   | 4.2      | 3.2   | 3.4   | 3.6      | 2.9 | 3.3   | 3.0      | 2.8 | 3.2 |     |
| 46.0                       |          |       |       |          | 3.2   | 3.2   | 3.8      | 3.0   | 3.2   | 3.3      | 2.7 | 3.1   | 2.8      | 2.6 | 3.0 |     |
| 48.0                       |          |       |       |          |       | 3.0   | 3.4      | 2.8   | 3.0   | 2.9      | 2.5 | 2.9   | 2.6      | 2.4 | 2.8 |     |
| 50.0                       |          |       |       |          |       |       |          | 2.7   | 2.8   | 2.6      | 2.4 | 2.7   | 2.4      | 2.2 | 2.6 |     |
| 52.0                       |          |       |       |          |       |       |          |       |       | 2.2      | 2.2 | 2.4   | 2.2      | 2.0 | 2.4 |     |
| 54.0                       |          |       |       |          |       |       |          |       |       |          |     | 2.0   | 2.1      | 1.9 | 1.8 | 2.1 |
| 56.0                       |          |       |       |          |       |       |          |       |       |          |     |       |          | 1.6 | 1.6 | 1.8 |
| 58.0                       |          |       |       |          |       |       |          |       |       |          |     |       |          |     |     | 1.5 |
| 组合<br>Combination          | 12211    | 11122 | 12221 |          | 11222 | 22221 |          | 12222 | 22222 |          |     | 33333 |          |     |     |     |
| 倍率<br>Parts of line        | 1        |       |       |          |       |       |          |       |       |          |     |       |          |     |     |     |
| 仰角范围<br>Angle area         | 39°~ 82° |       |       | 38°~ 82° |       |       | 40°~ 82° |       |       | 39°~ 82° |     |       | 38°~ 82° |     |     |     |
| 吊钩<br>Hook block           | 30t      |       |       |          |       |       |          |       |       |          |     |       |          |     |     |     |
| 钩重<br>Weight of hook block | 0.5t     |       |       |          |       |       |          |       |       |          |     |       |          |     |     |     |

- 表中额定总起重量所表示的数值, 是在平整坚固地面上本机起重机所能保证的最大起重量
- 表中额定起重量包含吊钩和吊具重量
- 起重臂的臂长组合中“0”表示吊臂伸出量为0%; “1”表示吊臂伸出量为46%; “2”表示吊臂伸出量为92%; “3”表示吊臂伸出量为100%。
- Total rated loads shown in the tables means the max load capacity crane can ensure when crane is set on flat and firm ground.
- Each total rated load in the tables includes weight of the hook and slings.
- In boom telescoping modes, 0 indicates that boom sections are not extended out; 1 indicates that boom sections are extended out 46%; 2 indicates that boom sections are extended out 92%; 3 indicates that boom sections are extended out 100%.

**QY130K-I 副臂起重性能表 Total rated lifting load for jib**

副臂长度20m, 全伸支腿7.6m, 平衡重39.5t, 360° 作业  
20m jib, 7.6m full-extend outrigger, 39.5t counterweight, 360° operation

| 工作幅度<br>Working radius<br>(m) | 臂长<br>Boom length<br>42.70m |     |     | 臂长<br>Boom length<br>46.90m |     |     | 臂长<br>Boom length<br>51.10m |     |     | 臂长<br>Boom length<br>55.30m |     |     | 臂长<br>Boom length<br>59.00m |     |     |
|-------------------------------|-----------------------------|-----|-----|-----------------------------|-----|-----|-----------------------------|-----|-----|-----------------------------|-----|-----|-----------------------------|-----|-----|
|                               | 0°                          | 15° | 30° | 0°                          | 15° | 30° | 0°                          | 15° | 30° | 0°                          | 15° | 30° | 0°                          | 15° | 30° |

起重量 Lifting load (t)

|                            |          |       |       |          |       |       |          |       |       |          |     |       |          |     |     |     |     |     |     |
|----------------------------|----------|-------|-------|----------|-------|-------|----------|-------|-------|----------|-----|-------|----------|-----|-----|-----|-----|-----|-----|
| 12.0                       | 6.0      | 5.8   |       |          |       |       |          |       |       |          |     |       |          |     |     |     |     |     |     |
| 14.0                       | 5.9      | 5.7   |       |          |       |       |          |       |       |          |     |       |          |     |     |     |     |     |     |
| 16.0                       | 5.8      | 4.3   | 5.6   |          |       | 5.3   |          |       | 5.0   |          |     | 4.5   |          |     |     |     |     |     |     |
| 18.0                       | 5.5      | 4.3   | 5.3   | 4.1      | 5.0   |       | 3.6      | 4.8   |       | 4.5      |     |       | 4.5      |     |     |     |     |     |     |
| 20.0                       | 5.2      | 4.0   | 3.2   | 5.1      | 3.8   | 4.9   |          | 3.4   | 4.5   |          | 3.3 | 4.3   |          | 3.0 |     |     |     |     |     |
| 22.0                       | 5.0      | 3.8   | 3.1   | 4.8      | 3.5   | 2.7   | 4.6      | 3.2   | 2.4   | 4.3      | 3.0 | 4.0   |          | 2.8 |     |     |     |     |     |
| 24.0                       | 4.7      | 3.5   | 3.0   | 4.5      | 3.3   | 2.6   | 4.3      | 3.1   | 2.3   | 4.0      | 2.9 | 2.4   | 3.9      | 2.7 | 2.3 |     |     |     |     |
| 26.0                       | 4.3      | 3.3   | 2.8   | 4.1      | 3.1   | 2.5   | 4.0      | 2.9   | 2.2   | 3.8      | 2.8 | 2.3   | 3.7      | 2.6 | 2.2 |     |     |     |     |
| 28.0                       | 4.0      | 3.0   | 2.7   | 3.8      | 2.9   | 2.4   | 3.7      | 2.6   | 2.1   | 3.7      | 2.7 | 2.2   | 3.5      | 2.5 | 2.1 |     |     |     |     |
| 30.0                       | 3.8      | 2.9   | 2.5   | 3.6      | 2.7   | 2.3   | 3.5      | 2.5   | 2.0   | 3.5      | 2.6 | 2.1   | 3.4      | 2.4 | 2.0 |     |     |     |     |
| 32.0                       | 3.7      | 2.7   | 2.4   | 3.4      | 2.6   | 2.2   | 3.3      | 2.4   | 2.0   | 3.3      | 2.5 | 2.0   | 3.3      | 2.3 | 1.9 |     |     |     |     |
| 34.0                       | 3.5      | 2.6   | 2.3   | 3.2      | 2.5   | 2.1   | 3.1      | 2.3   | 1.9   | 3.1      | 2.4 | 2.0   | 3.2      | 2.2 | 1.8 |     |     |     |     |
| 36.0                       | 3.4      | 2.5   | 2.2   | 3.1      | 2.4   | 2.0   | 2.9      | 2.2   | 1.9   | 2.9      | 2.3 | 1.9   | 3.1      | 2.1 | 1.8 |     |     |     |     |
| 38.0                       | 3.3      | 2.4   | 2.1   | 2.9      | 2.3   | 2.0   | 2.7      | 2.2   | 1.8   | 2.8      | 2.2 | 1.9   | 3.0      | 2.0 | 1.7 |     |     |     |     |
| 40.0                       | 3.2      | 2.4   | 2.0   | 2.8      | 2.2   | 1.9   | 2.5      | 2.1   | 1.8   | 2.7      | 2.1 | 1.9   | 2.8      | 2.0 | 1.6 |     |     |     |     |
| 42.0                       | 3.1      | 2.3   | 2.0   | 2.7      | 2.1   | 1.9   | 2.4      | 2.1   | 1.8   | 2.6      | 2.1 | 1.8   | 2.7      | 1.9 | 1.6 |     |     |     |     |
| 44.0                       | 3.0      | 2.2   | 1.9   | 2.6      | 2.1   | 1.8   | 2.3      | 2.0   | 1.7   | 2.5      | 2.0 | 1.8   | 2.6      | 1.9 | 1.5 |     |     |     |     |
| 46.0                       | 2.9      | 2.1   | 1.9   | 2.5      | 2.1   | 1.8   | 2.2      | 2.0   | 1.7   | 2.4      | 2.0 | 1.8   | 2.5      | 1.8 | 1.5 |     |     |     |     |
| 48.0                       | 2.8      | 2.1   | 1.8   | 2.4      | 2.0   | 1.7   | 2.1      | 1.9   | 1.7   | 2.3      | 1.9 | 1.7   | 2.4      | 1.7 | 1.5 |     |     |     |     |
| 50.0                       | 2.1      |       | 1.8   | 2.3      | 2.0   | 1.7   | 2.0      | 1.8   | 1.6   | 2.2      | 1.9 | 1.7   | 2.3      | 1.6 | 1.4 |     |     |     |     |
| 52.0                       |          |       |       |          | 1.8   | 2.2   | 1.8      | 1.7   | 2.0   | 1.8      | 1.6 | 2.1   | 1.9      | 1.7 | 2.2 | 1.5 | 1.4 |     |     |
| 54.0                       |          |       |       |          |       |       | 1.8      | 1.7   | 2.0   | 1.8      | 1.6 | 2.0   | 1.8      | 1.7 | 2.0 | 1.5 | 1.4 |     |     |
| 56.0                       |          |       |       |          |       |       |          |       | 1.7   | 2.0      | 1.7 | 1.5   | 1.9      | 1.7 | 1.6 | 1.8 | 1.5 | 1.4 |     |
| 58.0                       |          |       |       |          |       |       |          |       |       |          | 1.6 | 1.5   | 1.7      | 1.6 | 1.6 | 1.6 | 1.5 | 1.3 |     |
| 60.0                       |          |       |       |          |       |       |          |       |       |          |     |       | 1.5      | 1.4 | 1.5 | 1.5 | 1.3 | 1.4 | 1.3 |
| 62.0                       |          |       |       |          |       |       |          |       |       |          |     |       |          |     | 1.3 | 1.4 | 1.1 | 1.2 | 1.2 |
| 64.0                       |          |       |       |          |       |       |          |       |       |          |     |       |          |     |     | 1.1 | 1.2 |     |     |
| 组合<br>Combination          | 12211    | 11122 | 12221 |          | 11222 | 22221 |          | 12222 | 22222 |          |     | 33333 |          |     |     |     |     |     |     |
| 倍率<br>Parts of line        | 1        |       |       |          |       |       |          |       |       |          |     |       |          |     |     |     |     |     |     |
| 仰角范围<br>Angle area         | 40°~ 82° |       |       | 40°~ 82° |       |       | 39°~ 82° |       |       | 40°~ 82° |     |       | 41°~ 82° |     |     |     |     |     |     |
| 吊钩<br>Hook block           | 30t      |       |       |          |       |       |          |       |       |          |     |       |          |     |     |     |     |     |     |
| 钩重<br>Weight of hook block | 0.5t     |       |       |          |       |       |          |       |       |          |     |       |          |     |     |     |     |     |     |

- 表中额定总起重量所表示的数值, 是在平整坚固地面上本机起重机所能保证的最大起重量
- 表中额定起重量包含吊钩和吊具重量
- 起重臂的臂长组合中“0”表示吊臂伸出量为0%; “1”表示吊臂伸出量为46%; “2”表示吊臂伸出量为92%; “3”表示吊臂伸出量为100%。
- Total rated loads shown in the tables means the max load capacity crane can ensure when crane is set on flat and firm ground.
- Each total rated load in the tables includes weight of the hook and slings.
- In boom telescoping modes, 0 indicates that boom sections are not extended out; 1 indicates that boom sections are extended out 46%; 2 indicates that boom sections are extended out 92%; 3 indicates that boom sections are extended out 100%.

**QY130K-I 副臂起重性能表 Total rated lifting load for jib**

副臂长度28m, 全伸支腿7.6m, 平衡重39.5t, 360° 作业  
 28m jib, 7.6m full-extend outrigger, 39.5t counterweight, 360° operation

| 工作幅度<br>Working radius<br>(m) | 臂长<br>Boom length<br>42.70m |     | 臂长<br>Boom length<br>46.90m |    | 臂长<br>Boom length<br>51.10m |     | 臂长<br>Boom length<br>55.30m |     | 臂长<br>Boom length<br>59.00m |    |     |     |
|-------------------------------|-----------------------------|-----|-----------------------------|----|-----------------------------|-----|-----------------------------|-----|-----------------------------|----|-----|-----|
|                               | 0°                          | 15° | 30°                         | 0° | 15°                         | 30° | 0°                          | 15° | 30°                         | 0° | 15° | 30° |

起重量 Lifting load (t)

|                            |       |         |     |       |         |     |       |         |     |       |         |     |       |         |     |
|----------------------------|-------|---------|-----|-------|---------|-----|-------|---------|-----|-------|---------|-----|-------|---------|-----|
| 14.0                       | 3.7   |         | 3.6 |       |         |     |       |         |     |       |         |     |       |         |     |
| 16.0                       | 3.5   |         | 3.5 |       | 3.5     |     | 3.3   |         |     |       |         |     |       |         |     |
| 18.0                       | 3.4   |         | 3.2 |       | 3.4     |     | 3.1   |         | 2.9 |       |         |     |       |         |     |
| 20.0                       | 3.3   | 2.5     | 3.1 |       | 3.1     |     | 3.0   |         | 2.9 |       |         |     |       |         |     |
| 22.0                       | 3.1   | 2.4     | 2.9 | 2.3   | 3.0     | 2.2 | 2.8   |         | 2.8 |       |         |     |       |         |     |
| 24.0                       | 2.9   | 2.2     | 2.7 | 2.2   | 2.9     | 2.1 | 2.7   | 2.0     | 2.7 | 2.0   |         |     |       |         |     |
| 26.0                       | 2.7   | 2.1     | 1.8 | 2.6   | 2.1     | 1.7 | 2.7   | 2.0     | 2.6 | 1.9   | 2.6     | 1.9 |       |         |     |
| 28.0                       | 2.6   | 2.0     | 1.7 | 2.4   | 1.9     | 1.7 | 2.6   | 1.9     | 1.6 | 2.4   | 1.8     | 2.4 | 1.8   |         |     |
| 30.0                       | 2.4   | 1.9     | 1.6 | 2.3   | 1.8     | 1.6 | 2.4   | 1.8     | 1.6 | 2.3   | 1.8     | 1.5 | 2.3   | 1.8     | 1.5 |
| 32.0                       | 2.3   | 1.8     | 1.6 | 2.2   | 1.8     | 1.6 | 2.3   | 1.8     | 1.5 | 2.2   | 1.7     | 1.5 | 2.2   | 1.7     | 1.5 |
| 34.0                       | 2.2   | 1.7     | 1.5 | 2.1   | 1.7     | 1.5 | 2.2   | 1.7     | 1.5 | 2.1   | 1.7     | 1.5 | 2.1   | 1.6     | 1.4 |
| 36.0                       | 2.1   | 1.7     | 1.5 | 2.0   | 1.7     | 1.4 | 2.1   | 1.7     | 1.4 | 2.0   | 1.6     | 1.4 | 2.0   | 1.6     | 1.4 |
| 38.0                       | 2.0   | 1.6     | 1.4 | 1.9   | 1.6     | 1.4 | 2.0   | 1.6     | 1.4 | 1.9   | 1.6     | 1.4 | 1.9   | 1.6     | 1.4 |
| 40.0                       | 1.9   | 1.6     | 1.4 | 1.8   | 1.6     | 1.4 | 1.9   | 1.6     | 1.4 | 1.8   | 1.5     | 1.4 | 1.8   | 1.5     | 1.3 |
| 42.0                       | 1.8   | 1.5     | 1.3 | 1.7   | 1.5     | 1.3 | 1.8   | 1.5     | 1.3 | 1.7   | 1.5     | 1.3 | 1.7   | 1.5     | 1.3 |
| 44.0                       | 1.7   | 1.5     | 1.3 | 1.5   | 1.5     | 1.3 | 1.7   | 1.5     | 1.3 | 1.5   | 1.4     | 1.3 | 1.5   | 1.4     | 1.3 |
| 46.0                       | 1.6   | 1.4     | 1.3 | 1.4   | 1.4     | 1.3 | 1.5   | 1.4     | 1.3 | 1.4   | 1.4     | 1.3 | 1.4   | 1.4     | 1.2 |
| 48.0                       | 1.5   | 1.4     | 1.2 | 1.3   | 1.4     | 1.2 | 1.4   | 1.4     | 1.2 | 1.3   | 1.3     | 1.2 | 1.3   | 1.3     | 1.2 |
| 50.0                       | 1.5   | 1.3     | 1.2 | 1.3   | 1.3     | 1.2 | 1.3   | 1.3     | 1.2 | 1.3   | 1.2     | 1.2 | 1.3   | 1.2     | 1.2 |
| 52.0                       | 1.5   | 1.3     | 1.2 | 1.3   | 1.3     | 1.2 | 1.3   | 1.3     | 1.2 | 1.3   | 1.2     | 1.2 | 1.3   | 1.2     | 1.2 |
| 54.0                       | 1.5   | 1.3     | 1.2 | 1.3   | 1.2     | 1.2 | 1.3   | 1.3     | 1.2 | 1.2   | 1.2     | 1.1 | 1.2   | 1.2     | 1.1 |
| 56.0                       | 1.5   | 1.3     | 1.2 | 1.3   | 1.2     | 1.1 | 1.3   | 1.3     | 1.2 | 1.2   | 1.2     | 1.1 | 1.2   | 1.2     | 1.1 |
| 58.0                       |       | 1.3     | 1.2 | 1.3   | 1.2     | 1.1 | 1.2   | 1.2     | 1.1 | 1.2   | 1.2     | 1.1 | 1.2   | 1.2     | 1.1 |
| 60.0                       |       |         | 1.2 |       | 1.1     | 1.1 | 1.2   | 1.2     | 1.1 | 1.2   | 1.2     | 1.1 | 1.1   | 1.1     | 1.1 |
| 62.0                       |       |         |     |       | 1.1     | 1.1 | 1.2   | 1.2     | 1.1 | 1.2   | 1.1     | 1.1 | 1.1   | 1.1     | 1.0 |
| 64.0                       |       |         |     |       |         | 1.1 | 1.2   | 1.1     | 1.2 | 1.1   | 1.1     | 1.1 | 1.0   | 1.1     | 1.0 |
| 66.0                       |       |         |     |       |         |     | 1.2   | 1.1     |     | 1.1   | 1.1     |     | 1.0   | 1.0     | 1.0 |
| 68.0                       |       |         |     |       |         |     |       |         |     | 1.0   |         |     |       |         | 1.0 |
| 组合<br>Combination          | 12211 | 11122   |     | 12221 | 11222   |     | 22221 | 12222   |     | 22222 |         |     | 33333 |         |     |
| 倍率<br>Parts of line        |       |         |     |       |         |     |       |         |     | 1     |         |     |       |         |     |
| 仰角范围<br>Angle area         |       | 39°~82° |     |       | 39°~82° |     |       | 39°~82° |     |       | 40°~82° |     |       | 41°~82° |     |
| 吊钩<br>Hook Block           |       |         |     |       |         |     |       |         |     | 30t   |         |     |       |         |     |
| 钩重<br>Weight of hook block |       |         |     |       |         |     |       |         |     | 0.5t  |         |     |       |         |     |

- 表中额定总起重量所表示的数值, 是在平整坚固地面上本机起重机所能保证的最大起重量
- 表中额定起重量包含吊钩和吊具重量
- 起重臂的臂长组合中“0”表示吊臂伸出量为0%；“1”表示吊臂伸出量为46%；“2”表示吊臂伸出量为92%；“3”表示吊臂伸出量为100%。
- Total rated loads shown in the tables means the max load capacity crane can ensure when crane is set on flat and firm ground.
- Each total rated load in the tables includes weight of the hook and slings.
- In boom telescoping modes, 0 indicates that boom sections are not extended out; 1 indicates that boom sections are extended out 46%; 2 indicates that boom sections are extended out 92%; 3 indicates that boom sections are extended out 100%.

施工范例 CASE

徐工QAY800风电吊装

