



We build a better future

■ Some of the photos may include optional equipment.

North America Only

HYUNDAI LPG/GASOLINE FORKLIFT TRUCKS **Applied Tier 4 Engine**

25L/30/33L-7M

25G/30/33G-7M



NEW criteria of Forklift Trucks

Hyundai introduces a new line of 7M series
LPG / Gasoline forklift trucks.
Excellent power and performance make your
business more profitable.



OPSS (Operator Presence Sensing System)

Control of mast tilting, lifting and lowering is not possible through operation of the appropriate control when the operator is not in the seated position. (Option)

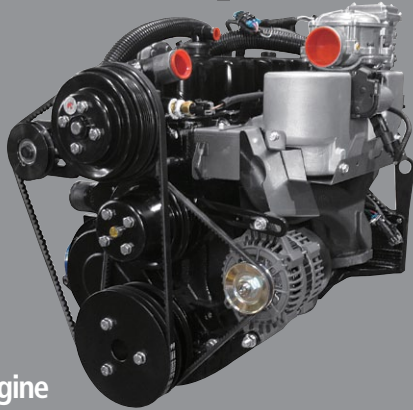


■ Some of the photos may include optional equipment.

The new master on the job-site!

Smooth running, efficient and ergonomically designed, 25L(G)/30L(G)/33L(G)-7M series are made to meet your needs.

64.1HP/ 2,400rpm



Powerful Engine GM 3.0L Engine

Market approved quality of GM 3.0L engine ensures incomparable performance, durability and additional value to the machine. Powerful and efficient engine provides excellent fuel consumption and excellent torque improved operator's comfort.

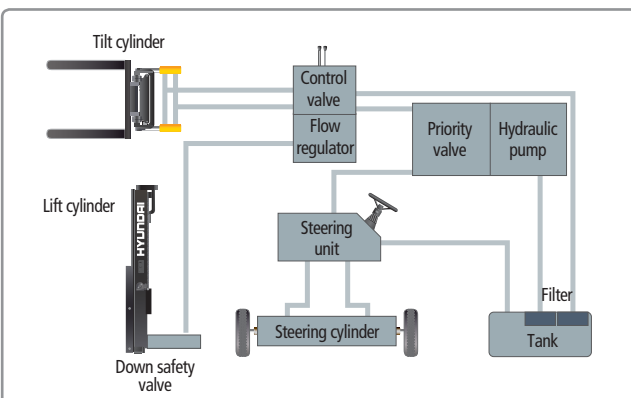
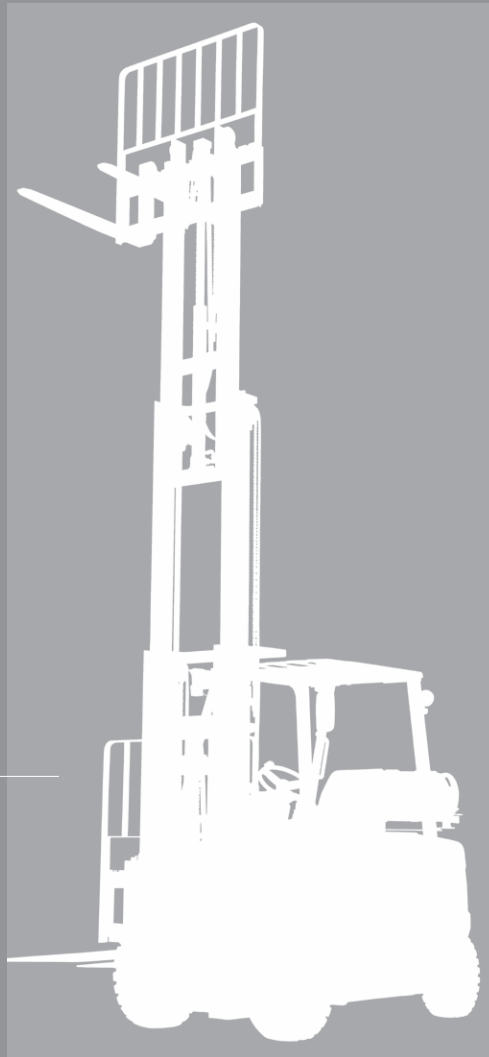
(EPA/CARB Tier-IV Certified)

Fast and Stable Performance

Being able to quickly raise and lower the mast, as well as tilt it forward and backward, provides the best operational conditions during unloading.

When the truck is fully loaded, mast lowering speed is carefully controlled to ensure safety by the down control valve .

Mast(Lift and Tilt) Look System. (Option)



State-of-the-art Hydraulic System

The latest large-capacity hydraulic system reacts quickly during operation, and a low-noise control valve increases both efficiency and durability.



Fully Hydrostatic Power Steering

A hydraulic steering system always guarantees smooth and flexible steering, preventing overrun and kick-back.

High Power Low Noise



■ Some of the photos may include optional equipment.



Increased Mast Tilting Angle

Utilizing the mast tilting angle of 6 degrees forward and 10 degrees backward, the operator can safely and rapidly perform loading and unloading jobs.

Faster Travel Speed & Better Gradability

The powerful high-output engine provides greater acceleration, better gradability and faster travel speed on any tough terrains or slopes.



Gradability (Loaded)

- 25L(G)-7M: 39.3%
- 30L(G)-7M: 32.1%
- 33L(G)-7M: 29.0%

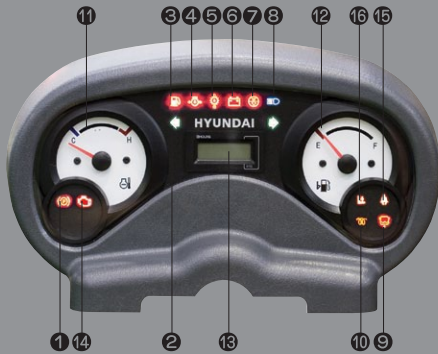
Travel Speed (Unloaded)

- 25L(G)-7M: 10.9 mph
- 30L(G)-7M: 11.5 mph
- 33L(G)-7M: 11.5 mph

Ergonomic operator friendly compartment design!

A design based on human engineering relieves fatigue and increases operator's efficiency.

Operator Friendly Gauges and Water-resistant Monitor Panel



- | | | |
|---|------------------------------------|---------------------|
| ① Parking brake lamp | ⑥ Battery charging warning lamp | ⑫ Fuel gauge |
| ② Directional indicators | ⑦ Air cleaner filter warning light | ⑬ Hour meter |
| ③ Fuel warning lamp | ⑧ Working light indicator | ⑭ Engine check lamp |
| ④ Engine oil warning lamp | ⑨ Water separator lamp | ⑮ Seat belt warning |
| ⑤ Transmission oil temperature warning lamp | ⑩ Pre-heater indicator | ⑯ OPS warning |
| | ⑪ Water temperature gauge | |



Full Suspension Seat

An attractive and adjustable seat, based on a human engineering design, provides great comfort, safety and durability.



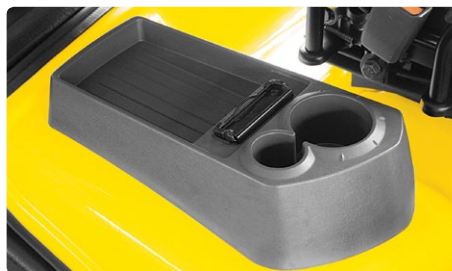
New High Visibility for Safe Operation

The operator is able to work with increased safety and accuracy due to a wider view mast.



Ergonomically Positioned Pedals

Based on human engineering, the accelerator, brake and inching pedals are optimally positioned for convenience while operating the equipment.



Cup Holder & Console Box

Additional storage spaces are located inside the operating space for operator's convenience.




Quick Response of Operating Control Levers

Only minimal operator's effort is required for precise, safe and productive control.



Travel Speed Control System (Option)



← In-Door : Max. Travel Speed (about 10 mph)

← Out Door : Max Travel Speed (Max vehicle speed)

■ Some of the photos may include optional equipment.



Adjustable Steering Wheel

Steering wheel with horn button can be adjusted by a lever on the right-hand side for the most comfortable operator position.



Easy and Safe Shift Lever

A single lever on the left side of the steering column gives the operator fast, easy control of direction. The lever must be in the neutral position before the engine can be started.



Secondary Horn

Secondary Horn gives access to lights and horn

Danger-free through high durability!

Safety and durability are priorities in design of the equipment.



Strong Overhead Guard

The safety overhead guard meets ISO 6055 regulation and protects the operator during hazardous jobs.

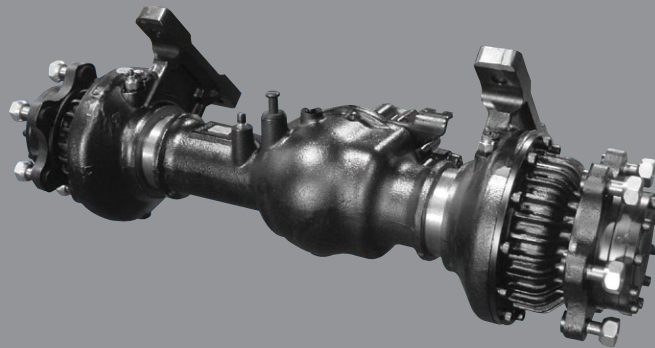


Parking Brake

Ratchet type parking brake requires less effort from the operator to set.

Highly Durable Split Type Drive Axle

The bevel gear set and hub reduction axle smoothly delivers desired torque to the drive wheels.



Large Footboard & Hand Grip

Wide "open" step offers convenience and safety when entering and exiting truck.



Expansion Bellows

The expansion bellows absorbs vibration and reduces noise generated from the exhaust gas system and also extends the life cycle of exhaust gas system.



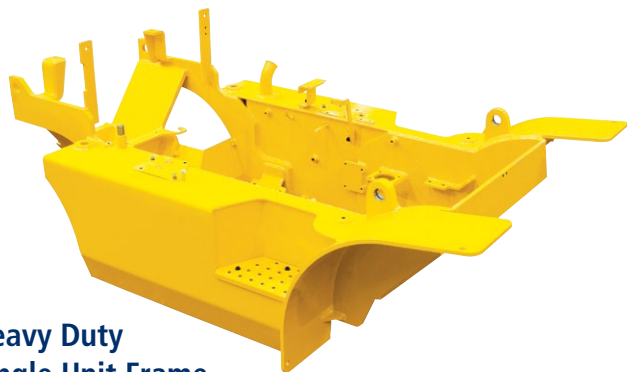
Electrically Monitored Air Filter

Air cleaner sensor alerts the operator of a restricted air filter and allows replacement before damage.



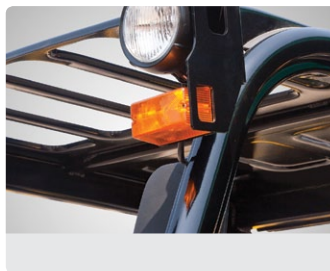


■ Some of the photos may include optional equipment.



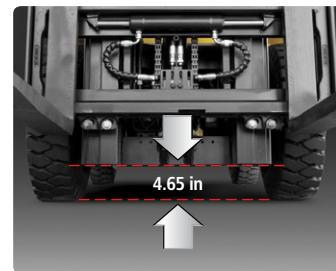
Heavy Duty Single Unit Frame

Heavy duty single unit type frame, designed on the basis of accurate structural analysis, guarantees durability and safety.



Bright, Protected Headlights

Bright, Protected head lights are positioned for exceptional visibility.

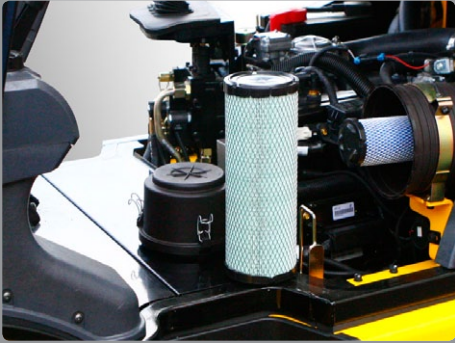


Ground Clearance

The engine and transmission are assembled horizontally and positioned high in the frame to protect major components during operation on rugged surface.

Designed for quick and easy service!

An ideal arrangement of component parts ensures easy access and convenience for maintenance.

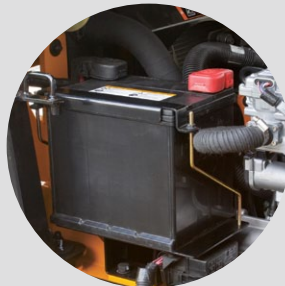


Easy Change Air Cleaner

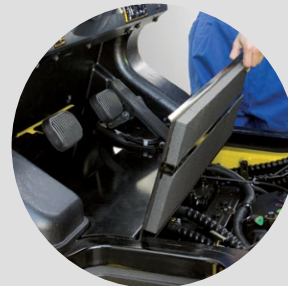
The air filter is readily accessible for cleaning or replacement. (6inch Cyclone Type)



Fast Service Access for Daily Fluids Check



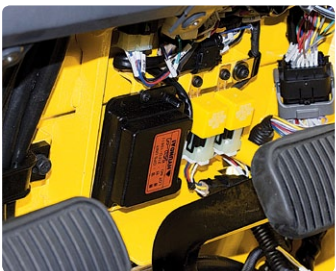
Rotational Battery Installation



One Touch, No Tool Floor Plate

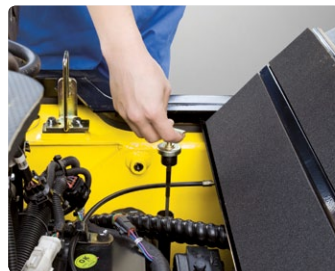


Removable Side Panels for Ease of Service



Improvement in Maintenance of Electric Parts

Various electric parts are centralized in dash board resulting in effortless troubleshooting.



Easy Maintenance Oil Check

The T/M oil level can be checked easily without any disassembly.



Brake Fluid Reservoir

Highly visible, easily accessible reservoir makes for quicker daily inspections.



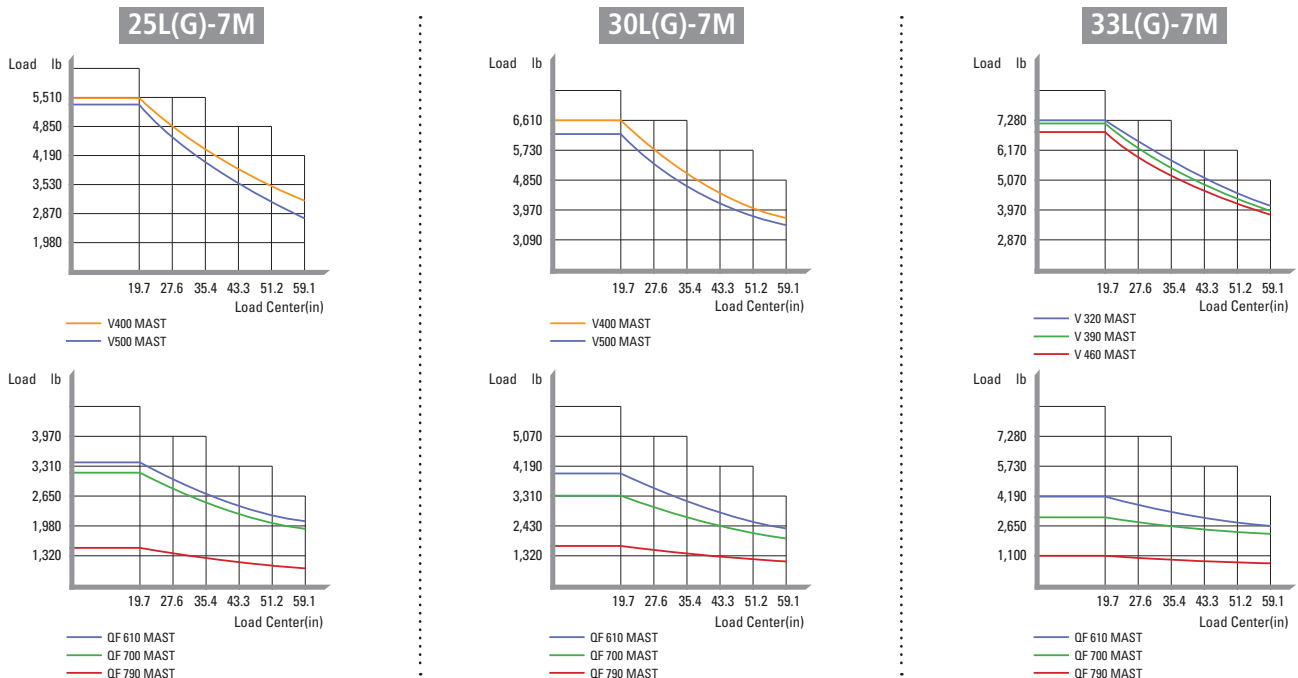
An Accessible, Compact Fuse Box for Easy Inspection

Mast Specification

Mast Type	Maximum Fork Height (in)		Overall Height Lowered (in)					Tilt Angle (deg)		Free Lift (in)						Load Capacity w / o Integral Side Shift 500mm LC (lb)						Load Capacity w / Integral Side Shift 500mm LC (lb)						Truck Weight Unload (lb)							
	25L(G)-7M 30L(G)-7M	33L(G)-7M	25L(G)-7M	30L(G)-7M	33L(G)-7M	Fwd	Bwd	With Backrest			With / o Backrest			Single Tire			Double Tire			Single Tire			Double Tire			Single Tire			Double Tire						
								25L(G)-7M	30L(G)-7M	33L(G)-7M	25L(G)-7M	30L(G)-7M	33L(G)-7M	25L(G)-7M	30L(G)-7M	33L(G)-7M	25L(G)-7M	30L(G)-7M	33L(G)-7M	25L(G)-7M	30L(G)-7M	33L(G)-7M	25L(G)-7M	30L(G)-7M	33L(G)-7M	25L(G)-7M	30L(G)-7M	33L(G)-7M	25L(G)-7M	30L(G)-7M	33L(G)-7M	25L(G)-7M	30L(G)-7M	33L(G)-7M	
2-Stage Limited Free Lift	V300 / V290	118.1	115.4	79.7	80.3	80.3	6	10	6.1	6.1	6.1	6.1	6.1	6.1	5000	6000	6500	5000	6000	6500	5000	6000	6500	5000	6000	6500	5000	6000	6500	8466	9206	9661	8767	9397	9875
	*V330 / V320	129.9	127.2	85.6	86.2	86.2	6	10	6.1	6.1	6.1	6.1	6.1	6.1	5000	6000	6500	5000	6000	6500	5000	6000	6500	5000	6000	6500	5000	6000	6500	8510	9250	9713	8810	9441	9927
	V350 / V340	137.8	133.9	89.6	90.2	90.2	6	10	6.1	6.1	6.1	6.1	6.1	6.1	5000	6000	6500	5000	6000	6500	5000	6000	6500	5000	6000	6500	5000	6000	6500	8547	9290	9748	8847	9481	9962
	V370 / V360	145.7	141.7	95.5	96.1	96.1	6	10	6.1	6.1	6.1	6.1	6.1	6.1	5000	6000	6500	5000	6000	6500	4820	6000	6500	4820	6000	6500	5000	6000	6500	8596	9340	9801	8896	9531	10015
	V400 / V390	157.4	153.5	101.4	102.0	102.0	6	10	6.1	6.1	6.1	6.1	6.1	6.1	4930	6000	6500	5000	6000	6500	4750	5920	6500	4820	6000	6500	4820	6000	6500	8662	9408	9871	8962	9599	10085
	V430 / V420	169.3	165.4	107.3	107.9	107.9	6	6	6.1	6.1	6.1	6.1	6.1	6.1	4850	5840	6500	5000	6000	6500	4670	5660	6500	4820	5950	6500	4820	6000	6500	8776	9524	9989	9076	9715	10203
	V450 / V440	177.2	173.2	113.2	113.8	113.8	6	6	6.1	6.1	6.1	6.1	6.1	6.1	4740	5730	6500	4938	1900	6500	4560	5550	6500	4758	1720	6500	8825	9574	10041	9125	9765	10255			
	V470 / V460	185.0	181.1	117.1	117.7	117.7	6	6	6.1	6.1	6.1	6.1	6.1	6.1	4630	5510	6500	4850	5790	6500	4450	5330	6500	4670	5780	6500	4670	6000	6500	8856	9608	10076	9157	9799	10290
2-Stage Full Free Lift	V500 / V490	196.9	192.9	123.0	123.6	123.6	6	6	6.1	6.1	6.1	6.1	6.1	6.1	4400	4740	6500	4630	5680	6500	4220	4560	6460	4450	5620	6500	4560	6000	6500	8905	9658	10129	9205	9849	10343
	VF290	115.4	115.4	79.7	80.3	82.3	6	6	33.3	33.9	35.8	54.2	51.7	50.0	5000	6000	6500	5000	6000	6500	5000	6000	6500	5000	6000	6500	5000	6000	6500	8568	9295	9759	8870	9485	9959
	VF320	127.2	127.2	85.6	86.2	88.2	6	6	39.2	39.8	41.7	60.1	57.6	55.9	5000	6000	6500	5000	6000	6500	5000	6000	6500	5000	6000	6500	5000	6000	6500	8641	9372	9837	8944	9562	10037
3-Stage Full Free Lift	TF370 / TS370	145.7	145.7	71.9	72.4	74.4	6	6	25.4	26.0	28.0	46.3	43.9	42.1	4930	6000	6500	5000	6000	6500	4750	5950	6500	4820	6060	6500	8767	9536	10073	9069	9726	10273			
	TF400 / TS400	157.4	157.4	75.8	76.4	78.3	6	6	29.3	29.9	31.9	50.3	47.8	46.0	4820	5840	6500	4930	6000	6500	4640	5780	6500	4750	5890	6500	8820	9590	10121	9122	9780	10322			
	TF430 / TS430	169.3	169.3	79.7	80.3	82.3	6	6	33.3	33.9	35.8	54.2	51.7	50.0	4710	5730	6500	4850	5880	6500	4530	5670	6500	4670	5780	6500	8860	9638	10167	9162	9828	10368			
	TF450 / TS450	177.2	177.2	83.7	84.3	86.2	6	6	37.2	37.8	39.8	58.1	55.7	53.9	4540	5660	6500	4760	5760	6500	4360	5560	6430	4580	5670	6500	8908	9694	10216	9210	9884	10416			
	TF470 / TS470	185.0	185.0	85.6	86.2	88.2	6	6	39.2	39.8	41.7	60.1	57.6	55.9	4400	5400	6500	4670	5660	6500	4220	5220	6390	4490	5480	6500	8938	9726	10245	9240	9915	10446			
	TF500 / TS500	196.9	196.9	89.6	90.2	92.1	6	6	43.1	43.7	45.7	64.1	61.6	59.8	3520	4630	6480	4580	5510	6500	3340	4450	6260	4400	5330	6500	8987	9775	10295	9289	9965	10495			
	TF550 / TS550	216.5	216.5	97.4	98.0	100	6	6	51.0	51.6	53.5	71.9	69.4	67.7	2640	3040	4400	4400	5290	6500	2460	2860	4190	4220	5110	6390	9073	9872	10391	9375	10062	10592			
	TF600 / TS600	236.2	236.2	105.3	105.9	107.9	6	6	58.9	59.4	61.4	79.8	77.3	75.6	1760	2020	2420	3520	4630	6390	1580	1840	2200	3340	4450	6170	9216	10026	10551	9518	10216	10752			
4-Stage Full Free Lift	QF610	240.7	240.7	85.0	85.6	87.6	3	3	39.3	37.6	41.1	59.5	57.0	3310	3730	4300	3810	4850	6240	3170	3550	4080	3520	4590	6060	9680	10351	10715	9980	10543	10883				
	QF660	260.4	260.4	92.9	93.5	95.5	3	3	47.1	47.0	49.0	67.4	64.9	64.9	3110	3530	4080	3590	4520	5950	2950	3350	3860	3420	4280	5730	9810	10484	10846	10110	10675	11015			
	QF700	276.2	276.2	96.8	97.4	99.4	3	3	51.1	51.0	53.0	71.3	68.9	68.9	2910	3110	3300	3510	4430	5690	2780	2950	3080	3310	4190	5420	9878	10550	10913	10178	10742	11082			
	QF745	293.9	293.9	102.8	103.3	105.3	3	3	57.0	56.9	58.9	77.2	74.8	74.8	2290	2510	2200	3310	4230	5380	2160	2360	1980	3150	3990	5160	9980	10651	11014	10280	10843	11183			
	QF790	311.6	311.6	108.7	109.3	111.2	3	3	62.9	62.8	64.8	83.1	80.7	80.7	1480	1570	1210	2090	2290	2860	1370	1430	1100	1920	2070	2640	10200	10874	11236	10500	11066	11405			

* TS-Mast : Wide Visible 3 Stage Full Free Lift Mast with 2 Free Lift Cylinders.

Load Capacity



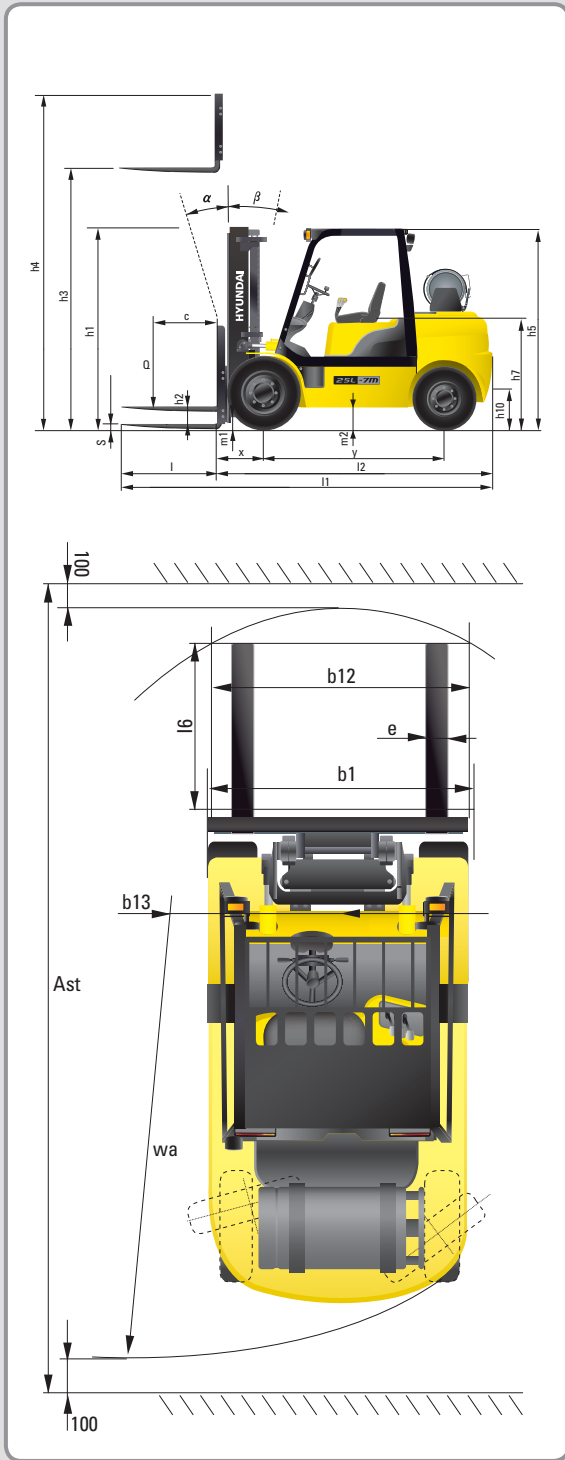
Optional Items

- CABIN & HEATER
- SIDE SHIFT / INTEGRAL SIDE SHIFT
- FORK (L x W x T) (in)

25L(G)-7M		
35.4 x 3.9 x 1.8	39.4 x 3.9 x 1.8	41.3 x 3.9 x 1.8
47.2 x 3.9 x 1.8	53.1 x 3.9 x 1.8	59.1 x 3.9 x 1.8
65.0 x 3.9 x 1.8	70.9 x 3.9 x 1.8	
- **30/33L(G)-7M**

35.4 x 4.8 x 1.8	41.3 x 4.8 x 1.8	45.3 x 4.8 x 1.8
47.2 x 4.8 x 1.8	53.1 x 4.8 x 1.8	59.1 x 4.8 x 1.8
65.0 x 4.8 x 1.8	70.9 x 4.8 x 1.8	77.6 x 4.8 x 1.8
83.5 x 4.8 x 1.8	90.6 x 4.8 x 1.8	94.5 x 4.8 x 1.8
- OVER SHOE(Extension Fork) : 51.2, 59.1, 66.9, 70.9(in)
- TILTING : 6/6, 3/3
- TIRE : Non marking, Double
- SEAT : Pocket, Arm Rest, Hip Rest
- LPG CLAMP : Swing Out, Swing Down
- M.C.V : 4-Spool
- ATTACH PIPING : 3 Spool-piping, 4 Spool-piping
- MASTER SWITCH / HAZARD SWITCH
- BEACON LAMP / WORK LAMP
- MULTIPLE SPEED SETTING CONTROL SENSOR
- PRE CLEANER

Dimension



Specification

Identification					
1.1	Manufacturer		Hyundai	Hyundai	Hyundai
1.2	Manufacturer's type designation		25L(G)-7M	30L(G)-7M	33L(G)-7M
1.3	Drive: electric (battery or mains), diesel, petrol, fuel gas, manual		LP / GAS	LP / GAS	LP / GAS
1.4	Type of operation: hand, pedestrian, standing, seated, order-picker		seated	seated	seated
1.5	Load capacity / rated load	Q (lb)	5,000	6,000	6,500
1.6	Load center distance	c (in)	24	24	24
1.8	Load distance, center of drive axle to fork	x (in)	18.4	18.4	18.4
1.9	Wheelbase	y (in)	65	66.9	66.9
Weights					
2.1	Service weight	lb	9328	9224	9,762
2.2	Axle loading, loaded front/rear	lb	12,131 / 1,709	13,882 / 1,956	14,894 / 2,145
2.3	Axle loading, unloaded front/rear	lb	3,481 / 4,848	3,503 / 5,721	3,475 / 6,287
Wheels, Chassis					
3.1	Tires: solid rubber, superplastic, pneumatic, polyurethane		Pneumatic	Pneumatic	Pneumatic
3.2	Tires size, front		7.00 - 12 - 12PR	8.15 - 15 - 14PR	8.15 - 15 - 14PR
3.3	Tires size, rear		6.00 - 9 - 10PR	6.50 - 10 - 12PR	6.50 - 10 - 12PR
3.5	Wheels, number front x rear (x = driven wheels)		2 x 2	2 x 2	2 x 2
3.6	Track width, front	b10 (in)	38	39.6	39.6
3.7	Track width, rear	b11 (in)	38.6	38.6	38.6
Basic Dimensions					
4.1	Mast / fork carriage tilt forward / backward(α / β)	degrees	6 / 10	6 / 10	6 / 10
4.2	Lowered mast height	h1 (in)	85.6	86.2	86.2
4.3	Free lift	h2 (in)	6.1	6.1	6.1
4.4	Lift height	h3 (in)	130	130	126
4.5	Extended mast height	h4 (in)	176.6	176.6	172.6
4.7	Overhead Guard (cab) height	h5 (in)	85	85.8	85.8
4.8	Seat height / standing height	h7 (in)	43.7	44.5	44.5
4.12	Coupling height	h10 (in)	11.1	11.8	11.8
4.19	Overall length	l1 (in)	3,639	3,742	3,782
4.20	Length to face of forks	l2 (in)	102.6	106.0	107.6
4.21	Overall width	b1 (in)	1,160	1,230	1,230
4.22	Fork dimensions	s / e / l (in)	41.3 x 3.9 x 1.8	41.3 x 3.9 x 1.8	41.3 x 4.8 x 1.8
4.23	Fork carriage ISO 2328, class / type A,B	ll / A	III / A	III / A	III / A
4.24	Fork-carriage width	b12 (in)	43.4	43.4	43.4
4.31	Ground clearance, loaded, under mast	m1 (in)	5.1	5.7	5.7
4.32	Ground clearance, centre of wheelbase	m2 (in)	6.7	7.4	7.4
4.33	Aisle width for pallets 1000 x 1200 crossways	Ast (in)	156.7	160.1	161.5
4.34	Aisle width for pallets 800 x 1200 lengthways	Ast (in)	164.4	168	169.4
4.35	Turning radius	Wa (in)	91.1	94.4	95.8
4.36	Smallest pivot point distance	b13 (in)	28.1	28.8	28.8
Performance Data					
5.1	Travel speed, Unloaded	mph	10.5	11.5	11.5
5.2	Lift speed, Loaded/Unloaded	fpm	118.1 / 120.1	114.1 / 120.1	94.5 / 100.4
5.3	Lowering speed, Loaded/Unloaded	fpm	98.4 / 88.6	98.4 / 88.6	98.4 / 88.6
5.5	Drawbar pull, Loaded	lb	5,664	5,875	5,390
5.7	Gradient performance, Loaded/Unloaded	%	39.3 / 22.0	32.1 / 20.0	29.0 / 18.3
5.10	Service brake		Froot	Froot	Froot
Engine					
6.1	Engine manufacturer / type		GM 3.0L	GM 3.0L	GM 3.0L
6.2	Engine power acc. to ISO 1585	HP	64.1	64.1	64.1
6.3	Rated speed	1/min	2,400	2,400	2,400
6.4	No. of cylinder / cubic capacity	/cm ³	4 / 2,967	4 / 2,967	4 / 2,967
Other Details					
8.2	Type of drive control		Power Shift	Power Shift	Power Shift
8.3	Operating pressure	bar	220 / 165	220 / 165	220 / 165
8.4	Oil volume	ℓ	30	30	30
8.5	Noise	db(A)	80	80	80

*Gasoline type is dual fuel.



6100 Atlantic Blvd, Norcross GA 30071
TEL (877) 509 2254 FAX (678) 823 7778

PLEASE CONTACT