



■ Some of the photos may include optional equipment.

HYUNDAI LPG / GASOLINE FORKLIFT TRUCKS **Applied Tier 4 Engine**

North America Only

25L/30L/33L-7A

25G/30G/33G-7A

NEW criteria of Forklift Trucks

Hyundai introduces a new line of 7A series
LPG / Gasoline forklift trucks.
Excellent power and performance make your
business more profitable.



OPSS (Operator Presence Sensing System)

Control of mast tilting, lifting and lowering is not possible through operation of the appropriate control when the operator is not in the seated position. (Option)

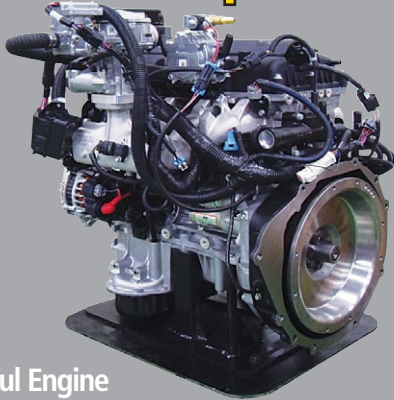
■ Some of the photos may include optional equipment.



The new master on the job-site!

Smooth running, efficient and ergonomically designed, 25L(G)/30L(G)/33L(G)-7A are made to meet your needs.

60PS/ 2,300rpm



Powerful Engine HMC L4KB(2.4L) Engine

Market approved quality of HMC L4KB engine ensures incomparable performance, durability and additional value to the machine. Powerful and efficient engine provides excellent fuel consumption and excellent torque improved operator's comfort.

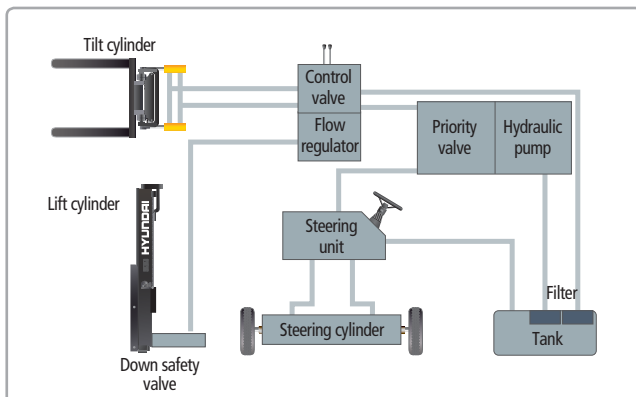
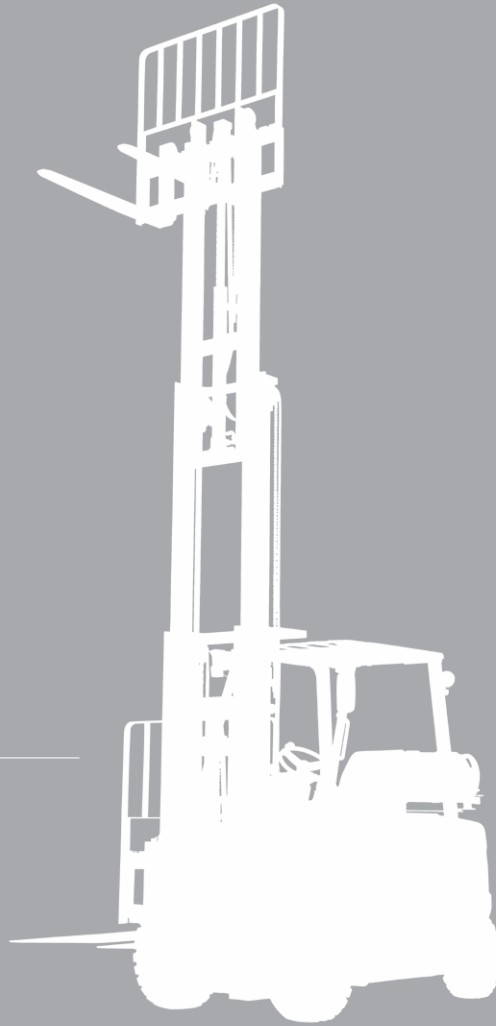
(EPA/CARB Tier-IV Certified)

Fast and Stable Performance

Being able to quickly raise and lower the mast, as well as tilt it forward and backward, provides the best operational conditions during unloading.

When the truck is fully loaded, mast lowering speed is carefully controlled to ensure safety by the down control valve .

Mast(Lift and Tilt) Look System. (Option)



State-of-the-art Hydraulic System

The latest large-capacity hydraulic system reacts quickly during operation, and a low-noise control valve increases both efficiency and durability.



Fully Hydrostatic Power Steering

A hydraulic steering system always guarantees smooth and flexible steering, preventing overrun and kick-back.

High Power Low Noise



■ Some of the photos may include optional equipment.



Increased Mast Tilting Angle

Utilizing the mast tilting angle of 6 degrees forward and 10 degrees backward, the operator can safely and rapidly perform loading and unloading jobs.

Faster Travel Speed & Better Gradability

The powerful high-output engine provides greater acceleration, better gradability and faster travel speed on any tough terrains or slopes.



Gradability(Loaded)

- 25L(G)-7A: 37.1°
- 30L(G)-7A: 29.8°
- 33L(G)-7A: 27.6°

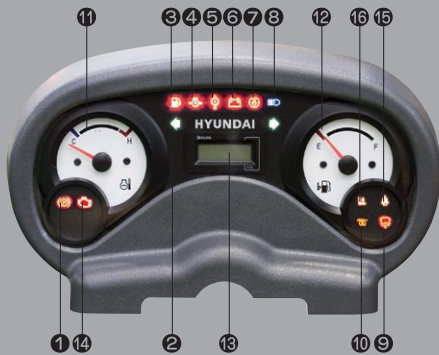
Travel Speed(Unloaded)

- 25L(G)-7A: 11.0 mph
- 30L(G)-7A: 11.6 mph
- 33L(G)-7A: 11.6 mph

Ergonomic operator friendly compartment design!

A design based on human engineering relieves fatigue and increases operator's efficiency.

Operator Friendly Gauges and Water-resistant Monitor Panel



- ① Parking brake lamp
- ② Directional indicators
- ③ Fuel warning lamp
- ④ Engine oil warning lamp
- ⑤ Transmission oil temperature warning lamp
- ⑥ Battery charging warning lamp
- ⑦ Air cleaner filter warning light
- ⑧ Working light indicator
- ⑨ Water separator lamp
- ⑩ Pre-heater indicator
- ⑪ Water temperature gauge
- ⑫ Fuel gauge
- ⑬ Hour meter
- ⑭ Engine check lamp
- ⑮ Seat belt warning
- ⑯ OPS warning



Full Suspension Seat

An attractive and adjustable seat, based on a human engineering design, provides great comfort, safety and durability.



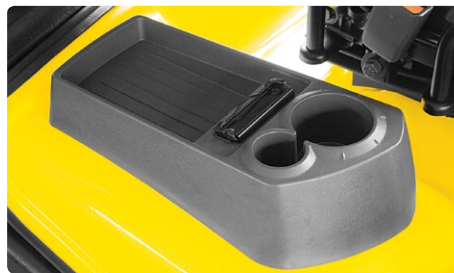
New High Visibility for Safe Operation

The operator is able to work with increased safety and accuracy due to a wider view mast.



Ergonomically Positioned Pedals

Based on human engineering, the accelerator, brake and inching pedals are optimally positioned for convenience while operating the equipment.



Cup Holder & Console Box

Additional storage spaces are located inside the operating space for operator's convenience.




Quick Response of Operating Control Levers

Only minimal operator's effort is required for precise, safe and productive control.



Travel Speed Control System (Option)

 ← In-Door : Customer Selection

← Out Door : Max Vehicle Travel Speed

■ Some of the photos may include optional equipment.



Adjustable Steering Wheel

Steering wheel with horn button can be adjusted by a lever on the right-hand side for the most comfortable operator position.



Easy and Safe Shift Lever

A single lever on the left side of the steering column gives the operator fast, easy control of direction. The lever must be in the neutral position before the engine can be started.



Secondary Horn

Secondary Horn gives access to lights and horn

Danger-free through high durability!

Safety and durability are priorities in design of the equipment.



Strong Overhead Guard

The safety overhead guard meets ISO 6055 regulation and protects the operator during hazardous jobs.

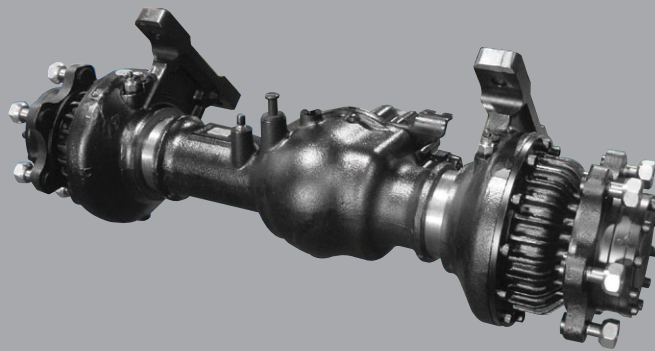


Parking Brake

Ratchet type parking brake requires less effort from the operator to set.

Highly Durable Split Type Drive Axle

The bevel gear set and hub reduction axle smoothly delivers desired torque to the drive wheels.



Large Footboard & Hand Grip

Wide "open" step offers convenience and safety when entering and exiting truck.



Expansion Bellows

The expansion bellows absorbs vibration and reduces noise generated from the exhaust gas system and also extends the life cycle of exhaust gas system.



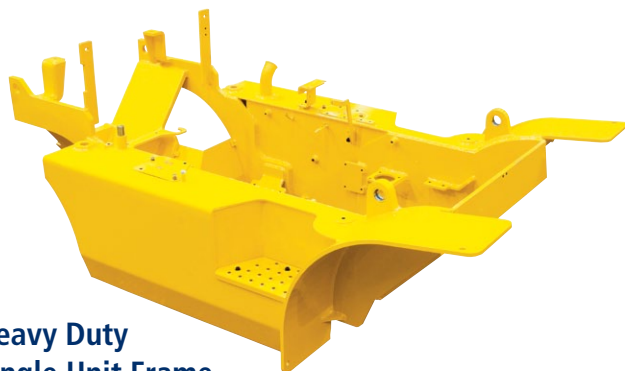
Electrically Monitored Air Filter

Air cleaner sensor alerts the operator of a restricted air filter and allows replacement before damage.





■ Some of the photos may include optional equipment.



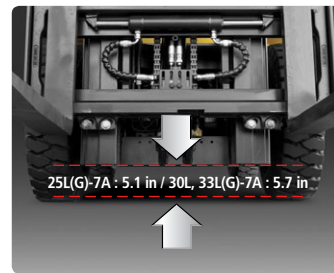
Heavy Duty Single Unit Frame

Heavy duty single unit type frame, designed on the basis of accurate structural analysis, guarantees durability and safety.



Bright, Protected Headlights

Bright, Protected head lights are positioned for exceptional visibility.



Ground Clearance

The engine and transmission are assembled horizontally and positioned high in the frame to protect major components during operation on rugged surface.

Designed for quick and easy service!

An ideal arrangement of component parts ensures easy access and convenience for maintenance.



Easy Change Air Cleaner

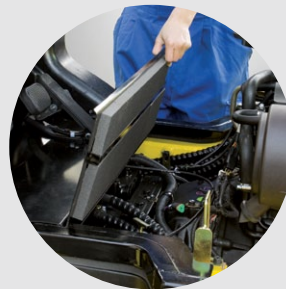
The air filter is readily accessible for cleaning or replacement. (6inch Cyclone Type)



Fast Service Access for Daily Fluids Check



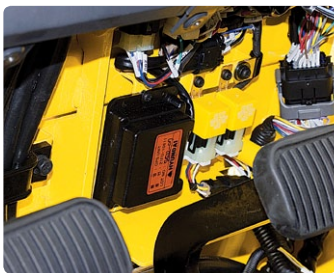
Rotational Battery Installation



One Touch, No Tool Floor Plate

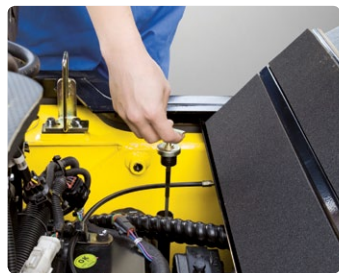


Removable Side Panels for Ease of Service



Improvement in Maintenance of Electric Parts

Various electric parts are centralized in dash board resulting in effortless troubleshooting.



Easy Maintenance Oil Check

The T/M oil level can be checked easily without any disassembly.



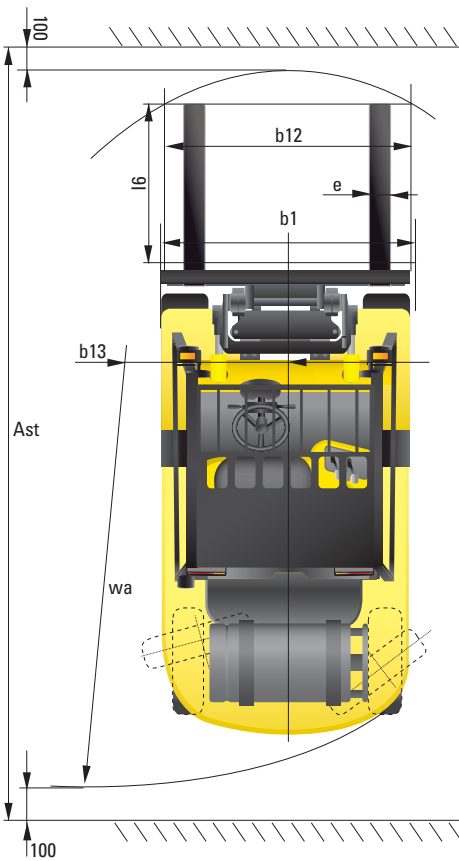
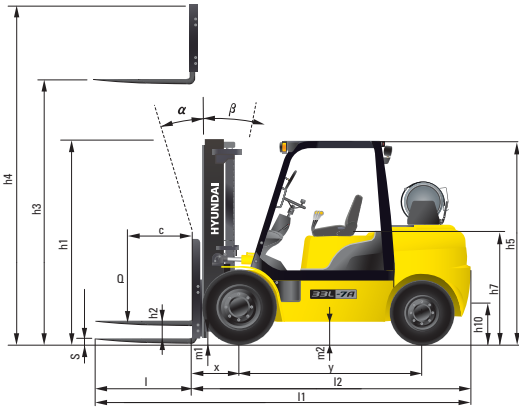
Brake Fluid Reservoir With Level Switch

When the brake oil level become lower than Min. level, the warning lamp on the clusters comes on.



An Accessible, Compact Fuse Box for Easy Inspection

Dimension



Specification

Identification			
1.1	Manufacturer	Hyundai	Hyundai
1.2	Manufacturer's type designation	25L(G)-7A	30L(G)-7A
1.3	Drive: electric (battery or mains), diesel, petrol, fuel gas, manual	LP / LP GAS	LP / LP GAS
1.4	Type of operation: hand, pedestrian, standing, seated, order-picker	seated	seated
1.5	Load capacity / rated load	Q (lb) 5,000	6,000
1.6	Load center distance	c (in) 24	24
1.8	Load distance, center of drive axle to fork	x (in) 18.4	18.4
1.9	Wheelbase	y (in) 65	66.9
Weights			
2.1	Service weight	lb 8,152	9,231
2.2	Axle loading, loaded front/rear	lb 11,995 / 1,657	13,830 / 2,001
2.3	Axle loading, unloaded front/rear	lb 3,268 / 4,884	3,472 / 5,759
Wheels, Chassis			
3.1	Tires: solid rubber, superplastic, pneumatic, polyurethane	Pneumatic	Pneumatic
3.2	Tires size, front	7.00 - 12	8.15 x 15
3.3	Tires size, rear	6.00 - 9	6.50 - 10
3.5	Wheels, number front x rear (x = driven wheels)	2 x 2	2 x 2
3.6	Track width, front	b10 (in) 38	39.6
3.7	Track width, rear	b11 (in) 38.6	38.6
Basic Dimensions			
4.1	Mast / fork carriage tilt forward / backward(α / β)	degrees 6 / 10	6 / 10
4.2	Lowered mast height	h1 (in) 85.6	86.2
4.3	Free lift	h2 (in) 6.1	6.1
4.4	Lift height	h3 (in) 130	126
4.5	Extended mast height	h4 (in) 176.6	176.6
4.7	Overhead load guard (cab) height	h5 (in) 85(86.5)	85.8(87.3)
4.8	Seat height / standing height	h7 (in) 43.7	44.5
4.12	Coupling height	h10 (in) 11.1	11.8
4.20	Length to face of forks	l2 (in) 102.1	106
4.21	Overall width	b1 (in) 45.7	48.4
4.22	Fork dimensions	s / e / l (in) 41.3 x 3.9 x 1.8	41.3 x 4.8 x 1.8
4.23	Fork carriage ISO 2328, class / type A,B	2 A	3 A
4.24	Fork-carriage width	b12 (in) 43.4	43.4
4.31	Ground clearance, loaded, under mast	m1 (in) 5.1	5.7
4.32	Ground clearance, centre of wheelbase	m2 (in) 6.7	7.4
4.33	Aisle width for pallets 1000 x 1200 crossways	Ast (in) 156.1	160.1
4.34	Aisle width for pallets 800 x 1200 lengthways	Ast (in) 164	168
4.35	Turning radius	Wa (in) 90.5	94.4
4.36	Smallest pivot point distance	b13 (in) 28.1	28.8
Performance Data			
5.1	Travel speed, Unloaded	mph 11.0	11.6
5.2	Lift speed, Loaded/Unloaded	fpm 23.6 / 24.0	22.8 / 24.0
5.3	Lowering speed, Loaded/Unloaded	fpm 19.7 / 17.7	19.7 / 17.7
5.5	Drawbar pull, Loaded	lb 5,318	5,064
5.7	Gradient performance, Loaded	% 37.1	29.8
5.9	Acceleration time, loaded/unloaded (10m)	sec -	-
5.10	Service brake	WET DISC	WET DISC
Engine			
6.1	Engine manufacturer / type	HMC L4KB	HMC L4KB
6.2	Engine power acc. to ISO 1585	PS 60	60
6.3	Rated speed	1/min 2,300	2,300
6.4	No. of cylinder / cubic capacity	/cm ³ 4 / 2,359	4 / 2,359
Other Details			
8.2	Type of drive control	Power Shift	Power Shift
8.3	Operating pressure	bar 220 / 165	220 / 165
8.4	Oil volume	ℓ 40	40



6100 Atlantic Blvd, Norcross GA 30071
TEL (877) 509 2254 FAX (678) 823 7778

PLEASE CONTACT